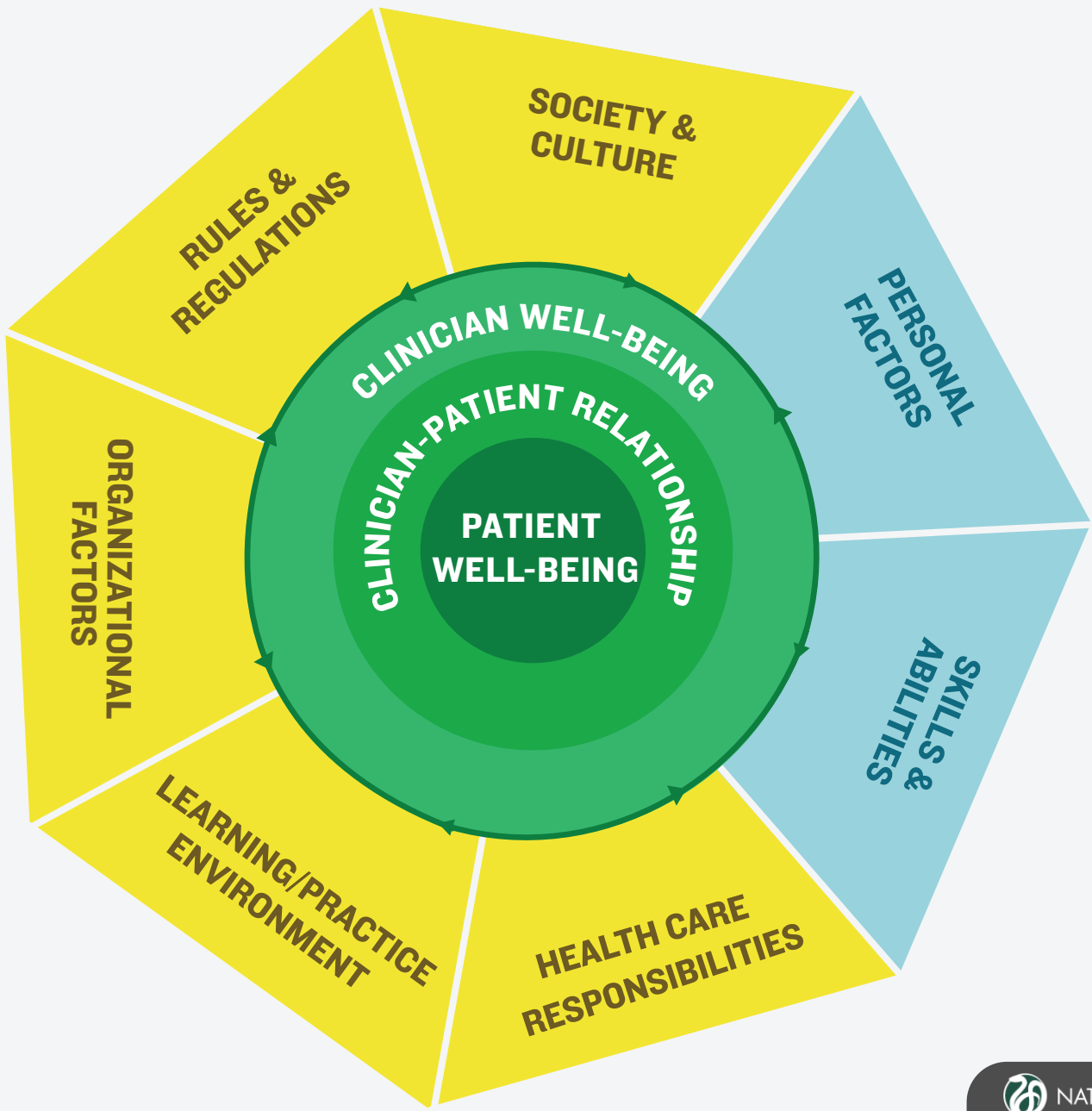


FACTORS AFFECTING CLINICIAN WELL-BEING AND RESILIENCE

This conceptual model depicts the factors associated with clinician well-being and resilience; applies these factors across all health care professions, specialties, settings, and career stages; and emphasizes the link between clinician well-being and outcomes for clinicians, patients, and the health system. The model should be used to understand well-being, rather than as a diagnostic or assessment tool. In electronic form, the external and individual factors of the conceptual model are hyperlinked to corresponding landing pages on the Clinician Well-Being Knowledge Hub. The Clinician Well-Being Knowledge Hub provides additional information and resources. The conceptual model will be revised as the field develops and more information becomes available.



EXTERNAL FACTORS

SOCIETY & CULTURE

- Alignment of societal expectations and clinician's role
- Culture of safety and transparency
- Discrimination and overt and unconscious bias
- Media portrayal
- Patient behaviors and expectations
- Political and economic climates
- Social determinants of health
- Stigmatization of mental illness

LEARNING/PRACTICE ENVIRONMENT

- Autonomy
- Collaborative vs. competitive environment
- Curriculum
- Health IT interoperability and usability/Electronic health records
- Learning and practice setting
- Mentorship program
- Physical learning and practice conditions
- Professional relationships
- Student affairs policies
- Student-centered and patient-centered focus
- Team structures and functionality
- Workplace safety and violence

INDIVIDUAL FACTORS

PERSONAL FACTORS

- Access to a personal mentor
- Inclusion and connectivity
- Family dynamics
- Financial stressors/economic vitality
- Flexibility and ability to respond to change
- Level of engagement/connection to meaning and purpose in work
- Personality traits
- Personal values, ethics and morals
- Physical, mental, and spiritual well-being
- Relationships and social support
- Sense of meaning
- Work-life integration

RULES & REGULATIONS

- Accreditation, high-stakes assessments, and publicized quality ratings
- Documentation and reporting requirements
- HR policies and compensation issues
- Initial licensure and certification
- Insurance company policies
- Litigation risk
- Maintenance of licensure and certification
- National and state policies and practices
- Reimbursement structure
- Shifting systems of care and administrative requirements

HEALTH CARE RESPONSIBILITIES

- Administrative responsibilities
- Alignment of responsibility and authority
- Clinical responsibilities
- Learning/career stage
- Patient population
- Specialty related issues
- Student/trainee responsibilities
- Teaching and research responsibilities

ORGANIZATIONAL FACTORS

- Bureaucracy
- Congruent organizational mission and values
- Culture, leadership, and staff engagement
- Data collection requirements
- Diversity and Inclusion
- Harassment and discrimination
- Level of support for all healthcare team members
- Power dynamics
- Professional development opportunities
- Scope of practice
- Workload, performance, compensation, and value attributed to work elements

SKILLS & ABILITIES

- Clinical Competency level/experience
- Communication skills
- Coping skills
- Delegation
- Empathy
- Management and leadership
- Mastering new technologies or proficient use of technology
- Optimizing work flow
- Organizational skills
- Resilience skills/practices
- Teamwork skills