

Navigating the Assessment Instrument Summaries

Assessment Instrument Name

Includes citation(s) from articles, reports, and websites identified through a search of academic and practitioner-based literature and organized by most recent publication date

ASSESSMENT INSTRUMENT OVERVIEW

Contains a brief synopsis on what the instrument measures, the number of questions it has, who has used it in the citation(s) above, and if applicable, the relationship between an instrument and others identified in the search

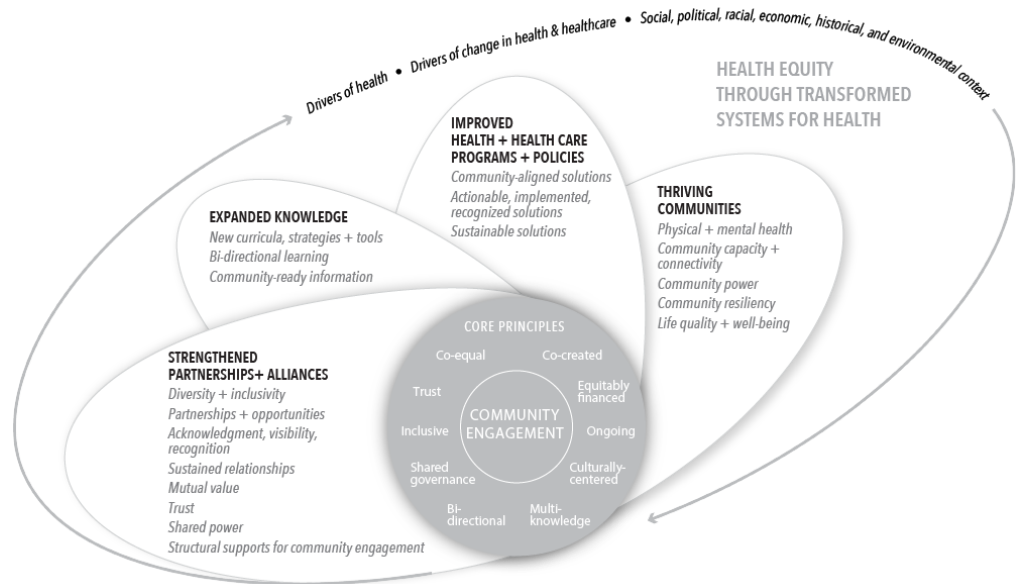
KEY FEATURES

Highlights key information from the citation(s) and about the instrument, including:

- Communities who took the instrument
- Alignment of the instrument with the Assessing Community Engagement Conceptual Model
- Geographic locations where the instrument was used
- Setting(s) or intended setting(s) for the instruments use
- Available language translations
- Psychometric properties of the instrument
- Year or time frame in which the instrument was used

ALIGNMENT WITH ASSESSING COMMUNITY ENGAGEMENT CONCEPTUAL MODEL

Presents **Figure 1** which displays an image of the Conceptual Model and where an instrument is mapped broadly with a domain or with a specific indicator (i.e., individual instrument questions are cross walked to the Model), the figure shows the alignment in blue font.



Presents **Table 1** which lists the alignment of the individual questions and, if applicable, the validated focus areas of the instrument to the Conceptual Model domain(s) and indicator(s)

CONCEPTUAL MODEL DOMAIN(S) AND INDICATOR(S)	ASSESSMENT INSTRUMENT QUESTIONS

ASSESSMENT INSTRUMENT BACKGROUND

Context of instrument development/use

Describes the rationale for developing or using the assessment instrument according to the context provided in the citation(s)

Instrument description/purpose

Shares the intended use of the instrument, its focus areas, the number of questions it contains, and information on response options and scoring. A link to access the full instrument is also provided

Engagement involved in developing, implementing, or evaluating the instrument

Describes any type of engagement with communities in the development, implementation, or evaluation of the instrument discussed in the citation(s)

Additional information on populations engaged in instrument use

Presents additional context provided in the citation(s) on the communities involved in the development, implementation, or evaluation of the instrument (e.g., demographic information)

Notes

- **Potential limitations:** Shares potential limitations or areas for improvement regarding the development, implementation, or evaluation of the instrument
- **Important findings:** Describes notable results, conclusions, or impacts/potential impacts from the citation(s)
- **Future research needed:** Presents future research needed to improve the instrument or general next steps for the field
- **Supplemental information:** Identifies additional sources from outside the literature search parameters which provide information on the instrument psychometric properties, updates or modifications to the instrument, community engagement, and populations who tested the instrument