

CLIMATE COMMUNITIES

Listening Session

December 8, 12pm-1:30pm ET



NATIONAL ACADEMY of MEDICINE | GRAND CHALLENGE ON
CLIMATE CHANGE, HUMAN HEALTH & EQUITY

nam.edu/ClimateCommunities

Welcome!

Thank you for joining us. We'll begin shortly.



WELCOME!



Faces of climate change



Increasing Levels of Carbon Dioxide and Short-Lived Climate Pollutants



Rising Temperature



Rising Sea Levels



Increasing Extreme Weather Events



Demographic, Socioeconomic, Environmental, and Other Factors That Influence the Magnitude and Pattern of Risks

Geography
Ecosystem change
Baseline air and water quality
Agricultural and livestock practices and policies

Warning systems
Socioeconomic status
Health and nutritional status
Access to effective health care

EXPOSURE PATHWAYS

Extreme Weather Events

Heat Stress

Air Quality

Water Quality and Quantity

Food Supply and Safety

Vector Distribution and Ecology

Social Factors

EXAMPLES OF HEALTH OUTCOMES

Injuries, fatalities, mental health effects

Heat-related illness and death, cardiovascular failure

Asthma and other respiratory diseases, cardiovascular disease

Infectious disease, e.g., cholera, campylobacter, leptospirosis, etc.

Malnutrition, diarrheal disease, Mycotoxin effects

Infectious disease, e.g., malaria, dengue, Zika, West Nile, etc.

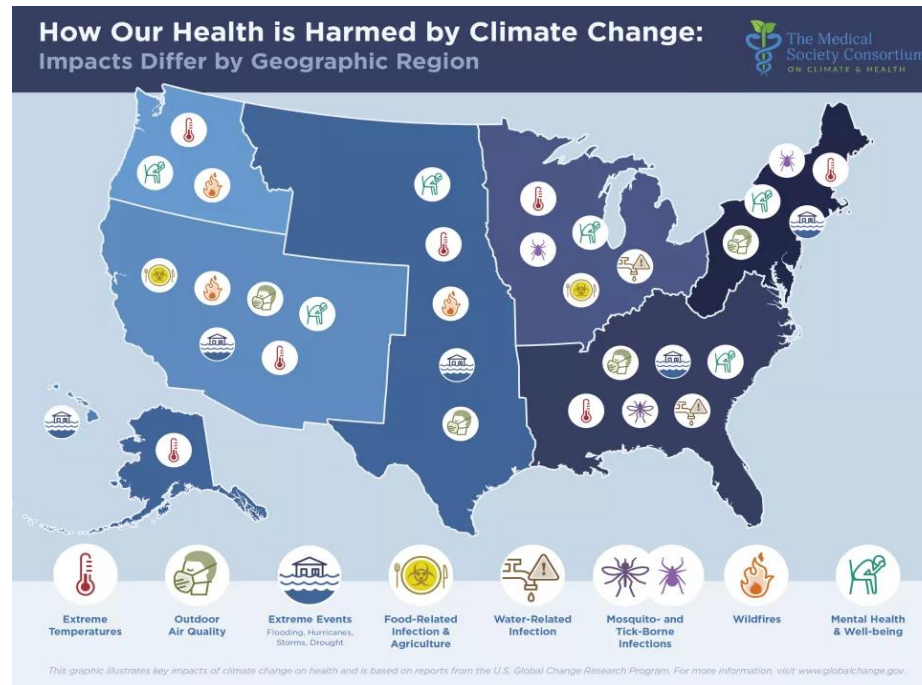
Forced migration, civil conflict, mental health impacts

The Climate Crisis is a Public Health Crisis

- 20 million deaths each year globally due to key factors linked to climate change, e.g.,
 - Air pollution: 7 million deaths globally, 100,000+ deaths in US
 - Vector-borne disease: Rises in malaria and dengue fever, ~700,000 deaths each year; rise in new pandemics, such as COVID-19, 6+ million deaths
 - Water and Food Supply: 500,000+ children die because of no access to safe drinking water
 - Malnourishment → stunting, impaired mental development
 - Climate-fueled disasters: 475,000 deaths, 2000-2019
- Forced migration: by 2030, ~700 million “climate refugees”



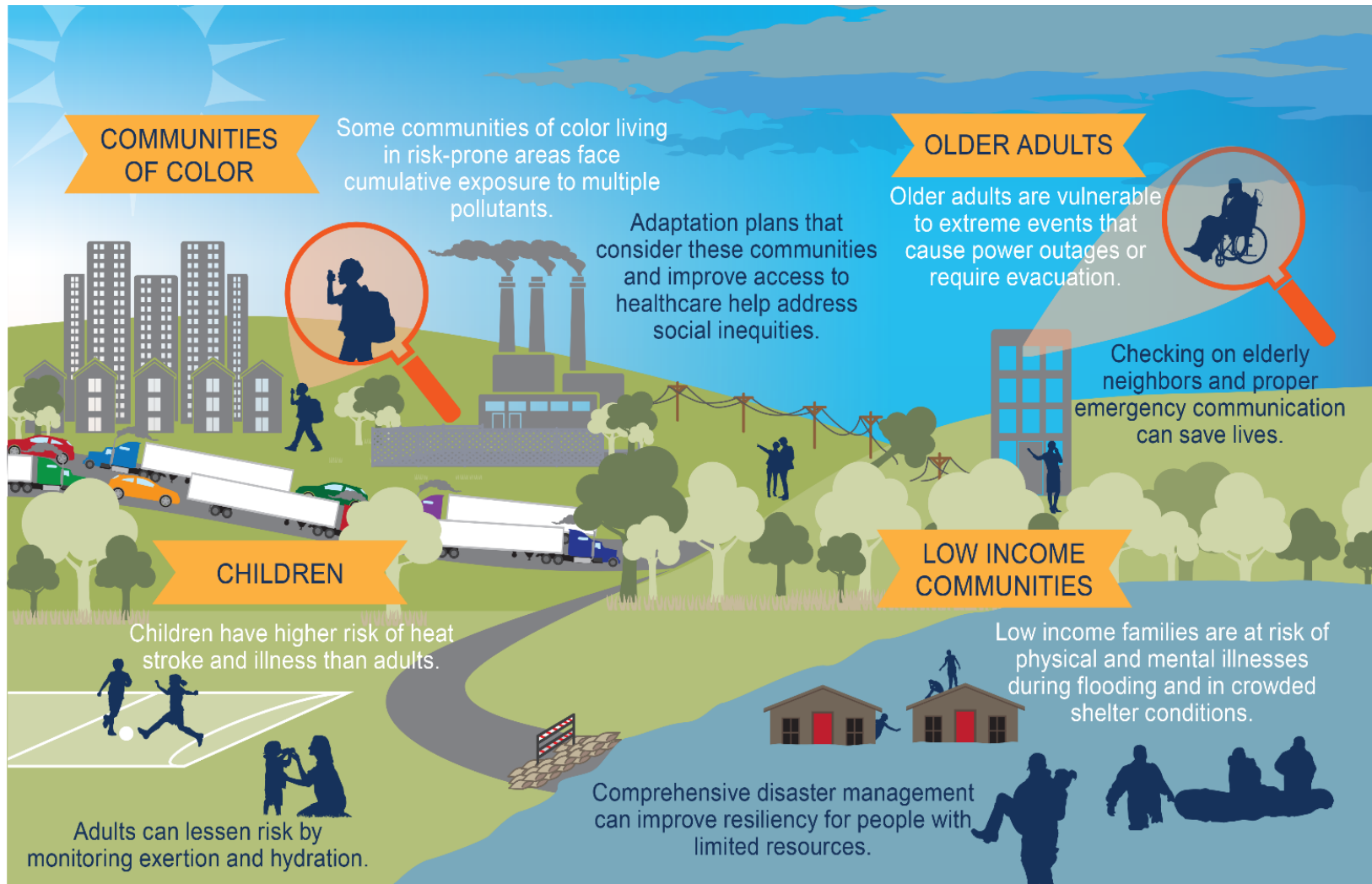
Impact on Health Across the US



- **Asthma and respiratory diseases:** 150,000 deaths/year
- **Heat-related illness and death:** Up to 20,000 deaths/year in North America
- **Injuries and fatalities:** 2,135 additional people could die every year due to climate-related injuries if temperatures rise 2°C over current averages
- **Infectious disease:** Vector-borne diseases more than doubled 2014-2018
- **Mental health:** Suicide rates increased 0.7% for each 1°C rise in temps
- **Economic toll:** Health costs top \$820 billion annually

Climate Change & Human Health

Unequal Risks & Impacts



Source: [*The Fourth National Climate Assessment*](#)



NATIONAL ACADEMY OF MEDICINE

Environmental Injustice

Unequal access to a clean environment and basic environmental resources based on race, including the disproportionate impact of environmental hazards on people of color.

Examples in the U.S.—

- Impacts of Hurricane Katrina in New Orleans, Louisiana
- “Asthma Alley” in the South Bronx
- Water crisis in Flint, Michigan
- Black Snow in Pahokee, Florida
- “Cancer Alley” in Louisiana
- Mining project on Apache sacred land in Oak Flat, Arizona
- Proximity to factories and power plants in South Philadelphia
- Formerly redlined neighborhoods at increased risk of flooding

National Academy of Medicine

Grand Challenge on Climate Change, Human Health, and Equity

Climate Grand Challenge Steering Committee

1. Communicate the climate crisis as a public health and equity crisis.

2. Develop a roadmap for systems transformation.

3. Catalyze the health sector to reduce its carbon footprint and ensure its resilience.

4. Accelerate research and innovation at the intersection of climate, health, and equity.

Climate Communities Network



Climate Communities Network

Rationale

- The combined, intersecting impact of climate change and structural racism has contributed to *and* exacerbated health inequities among historically and currently marginalized communities in the US.
- These communities are often not equitably engaged as partners in the related research, policy, intervention, and funding decisions that affect their community's health.



Climate Communities Network

Purpose

The Network will endeavor to **engage and center the expertise of communities** in regions disproportionately impacted by climate change to **address health inequities**.

The Network will have two main goals:

- Inform the strategic direction and outcomes of the Climate Grand Challenge.
- Work collaboratively to identify and develop solutions to climate-related health inequities.



slido



When you think about climate change right now, how do you feel? Tell us in one word.

ⓘ Start presenting to display the poll results on this slide.

Agenda:

1. Presentation

- Vision & Impact
- Key Players
- Member Recruitment & Selection Approach
- Launch Timeline

2. Discussion & Feedback

3. Closing



Ways to share your feedback:

Please share your expertise, insights, and perspectives in whatever way feels most comfortable to you!

- Raise your hand and share verbally.
- Write questions and comments in the Zoom chat.
- Use Zoom reactions.
- Fill out and share the post-session survey.





VISION & IMPACT

Climate Communities Network

Vision

*We envision a society that equitably prioritizes
and protects the health of **all** communities
from the threats of climate change.*



Climate Communities Network

Anticipated Impact

Potential Focus Areas

Anticipated Outcomes

Policy



Community input on federal, state, and local policies

Funding



Equitable, community-driven investments and innovative funding models

Research
& Data



Representative and context-specific data

Capacity
Building



Knowledge and use of environmental justice tools and resources



Climate Communities Network

NAM's Commitment

- Elevate community-driven efforts.
- Convene the Network regularly.
- Engage Network members as equal partners.
- Leverage NAM's platform to foster relationship-building and expand access to resources.





KEY PLAYERS

Climate Communities Network

Key Players

Members

- Core group of community leaders working for community-based organizations and identified through an application process
- Will work with each other, strategic partners, and the NAM to advance community priorities
- Up to 12

Strategic Partners

- Complementary group of invited governmental and non-governmental organizations
- Will provide relevant support, resources, and connections to members and guidance to NAM staff
- Up to 8

Climate Communities Network

Member Qualifications

Baseline

- ☐ Member works for a community-based organization in area disproportionately impacted by climate change.
- ☐ Organization must be focused on addressing climate-related health inequities.

Preferred

- ☐ Member lives in the same community their organization serves.
- ☐ Member + organization have experience planning and implementing community-based solutions.
- ☐ Member + organization have experience working with diverse community partners.
- ☐ Member + organization have capacity to effectively communicate with community members.



Climate Communities Network

Strategic Partner Qualifications

- ☐ Ability to leverage organizational platform and resources
- ☐ Dedication to health equity and community engagement
- ☐ Understanding of connection between climate and health
- ☐ Relevant multi-sector expertise
- ☐ Ability to facilitate connections and partnerships
- ☐ Ability to advise NAM staff



Climate Communities Network

Expectations

- Participate in the Network for at least 12 months.
- Actively engage in regular Network meetings.
- Serve as liaisons between their respective organizations/communities and the NAM.
- Participate in evaluation activities to assess the Network's impact.



Climate Communities Network

Benefits

- Access to forums for learning, networking, and collaboration with peers and fellow experts.
- Increased visibility of their own organization's work.
- Opportunities to advance policies, research, funding, and other interventions aligned with community priorities.
- Opportunities to inform and advance the priorities and efforts of national initiatives.



MEMBER RECRUITMENT & SELECTION APPROACH

Informing Member Recruitment & Selection

Collaboration with UMD Center for Community Engagement, Environmental Justice, and Health

- Literature review & synthesis → Promotion of opportunity to apply
- Mapping exercise with national screening tools → Application review
- Case studies on community-driven actions and solutions → Promising practices

Climate Communities Network

Application Format

- Written online application
 - Responsive design
 - Translation
 - Offer verbal application upon request
- Verbal application
 - Taken over the phone and transcribed

Climate Communities Network

Application Review Process

- Eligibility screen
- Preliminary sorting and scoring
- In-depth review with rubric
- Meeting and selection of finalists
- Letter of endorsement/support





LAUNCH TIMELINE

Climate Communities Network

Timeline

- **December '22:** Hold public listening session.
- **January '23:** Open applications.
- **February '23:** Close applications.
- **March '23:** Launch Network.



Climate Communities Network

Early Priorities

- Co-developing Network charter, mission, vision, and values.
- Solidifying Network structure, governance, etc.
- Determining Network work plan.
- Integrating Network members across Climate Grand Challenge.



***Our sincere thanks to our sponsor,
The JPB Foundation, for making this
work possible.***



DISCUSSION & FEEDBACK

Ways to share your feedback:

Please share your expertise, insights, and perspectives in whatever way feels most comfortable to you!

- Raise your hand and share verbally.
- Write questions and comments in the Zoom chat.
- Use Zoom reactions.
- Fill out and share the post-session survey.



Climate Communities Network

Discussion Structure

- Recruitment Approach & Scope
- Program Benefits
- Member Engagement





Which topic would you like to discuss first?

Climate Communities Network

Discussion

Recruitment Approach & Scope (~10-15 min)

- Eligibility considerations?
- Other ways NAM can modify the application format to make it more accessible?

Climate Communities Network

Member Qualifications

Baseline

- ☐ Member works for a community-based organization in area disproportionately impacted by climate change.
- ☐ Organization must be focused on addressing climate-related health inequities.

Preferred

- ☐ Member lives in the same community their organization serves.
- ☐ Member + organization have experience planning and implementing community-based solutions.
- ☐ Member + organization have experience working with diverse community partners.
- ☐ Member + organization have capacity to effectively communicate with community members.



Climate Communities Network

Application Format

- Written online application
 - Responsive design
 - Translation
 - Offer verbal application upon request
- Verbal application
 - Taken over the phone and transcribed

Climate Communities Network

Discussion

Program Benefits (~10-15 min)

- Beyond the existing program benefits, what other incentives or opportunities might NAM consider providing?
- Examples or best practices of equitable models for financial compensation?

Climate Communities Network

Benefits

- Access to forums for learning, networking, and collaboration with peers and fellow experts.
- Increased visibility of their own organization's work.
- Opportunities to advance policies, research, funding, and other interventions aligned with community priorities.
- Opportunities to inform and advance the priorities and efforts of national initiatives.

Climate Communities Network

Discussion

Member Engagement (~10-15 min)

- Promising approaches for equitable collaboration and shared leadership with community members?

Closing & Thank You!

- Email forthcoming later this month with recording, slides, and survey.
- Email forthcoming early next year once applications go live.
- Sign up for our mailing list: <http://bit.ly/NAMListserv>.
- Reach out to us at ClimateCommunities@nas.edu at any point.