



***Climate Change & Human Health:  
Navigating Environmental, Societal & Human Impacts***

**Climate Changes Health: Protecting Health In A Turbulent Ecosystem**

**National Academy of Medicine  
Annual Meeting  
10/19/2020**



**Georges C. Benjamin, MD  
Executive Director**

# **2020 A Turbulent Year**





**Numerous Named Storms**  
**Hurricane Laura 8/27/2020**

**Now Hurricane Delta**

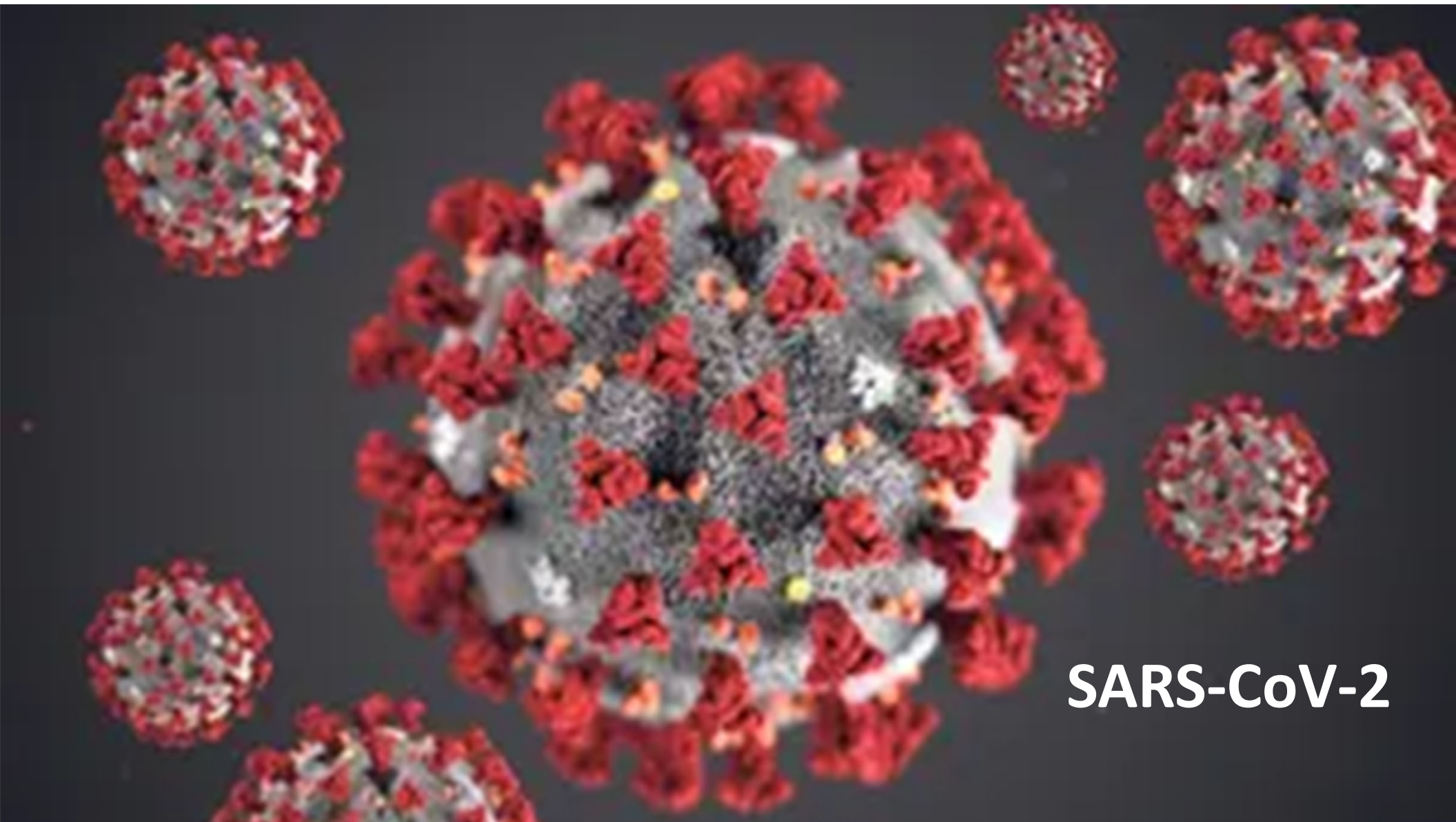


# **Western Wildfires**

## **Extreme Heat & Drought**

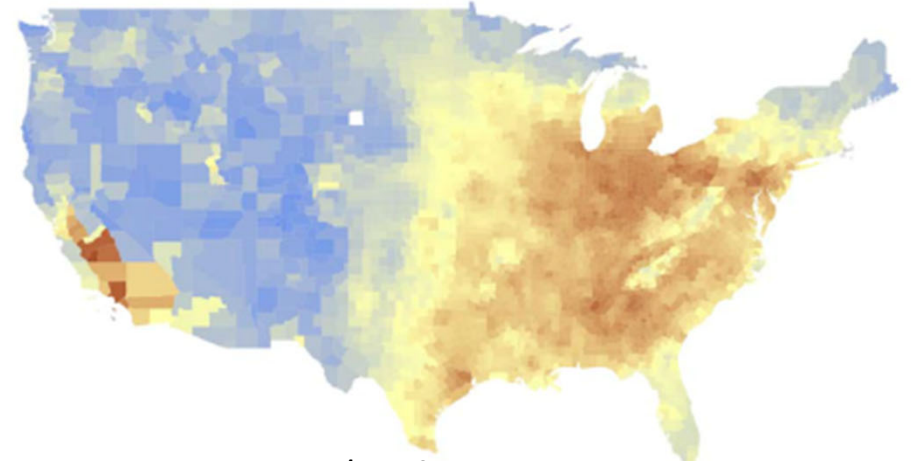


**Air Pollution**



**SARS-CoV-2**

# Exposure to air pollution and COVID-19 deaths in the United States

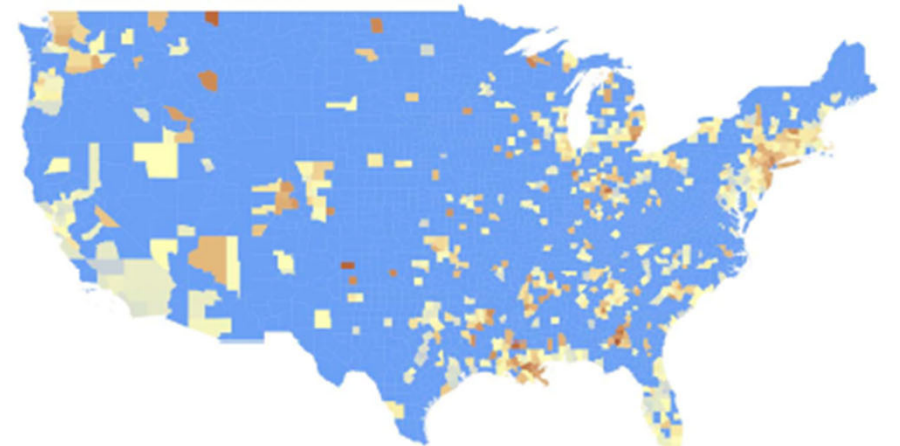


Average PM<sub>2.5</sub> concentrations in g/m<sup>3</sup> from 2000-2016 in the US

PM<sub>2.5</sub> 0 3 6 9 12+

**Results: “We found that an increase of just 1 ug/m<sup>3</sup> in PM<sub>2.5</sub> is associated with an 8% increase in the COVID-19 death rate.”**

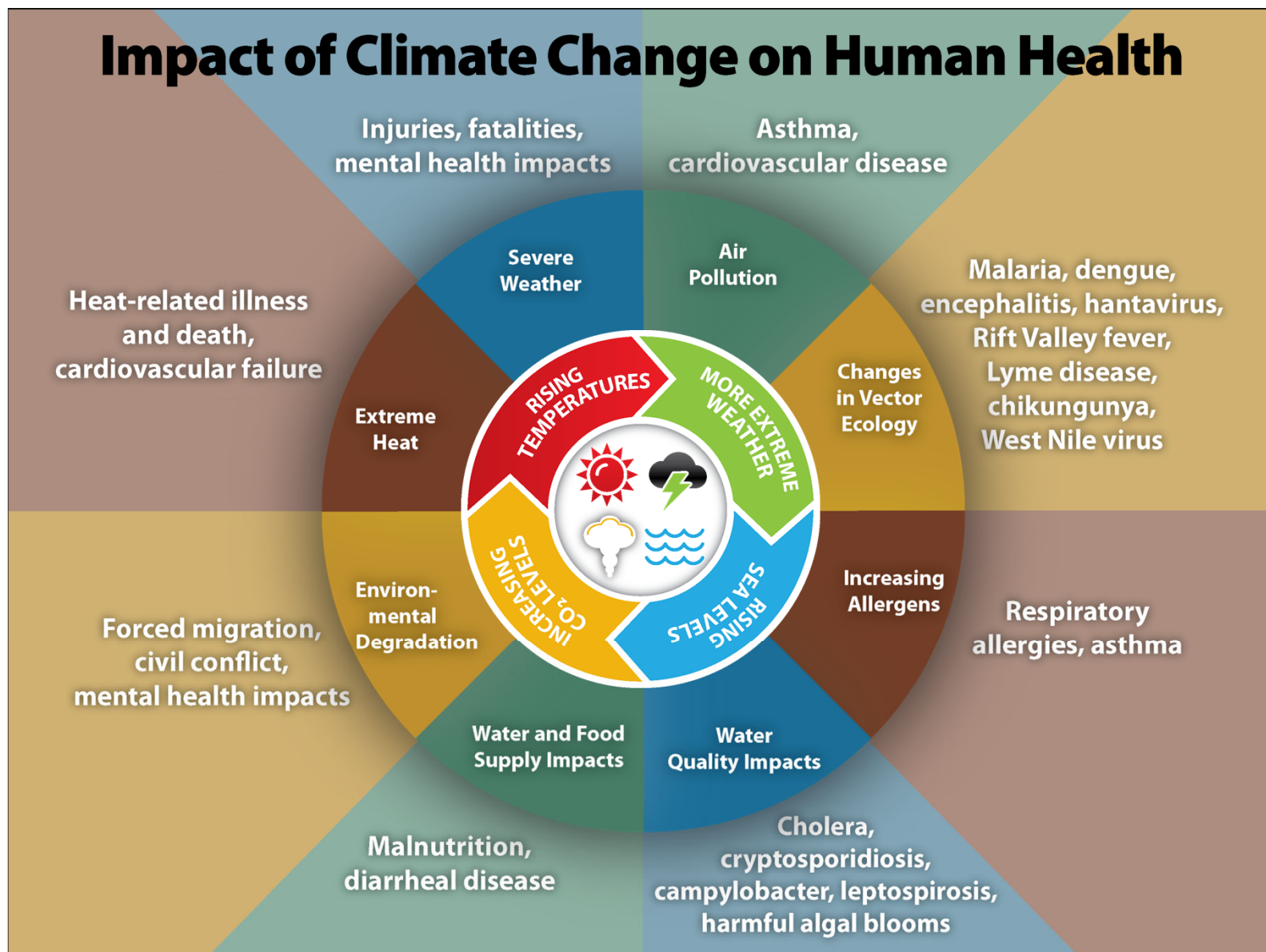
Wu, et al. NEJM, April, 2020



County level number of COVID-19 deaths per one million population up until April 4, 2020

# COVID-19 deaths per 1 million 0 1 10 100 1000+

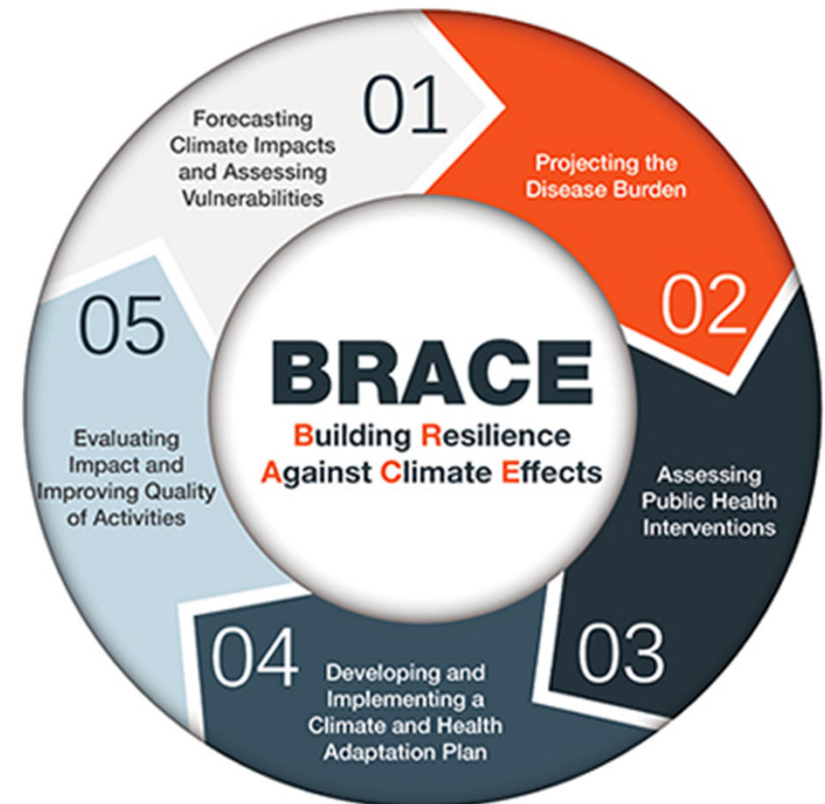
# Impact of Climate Change on Human Health



# Public Health: Responding In Turbulent Times



10 Essential Public Health Services



## About APHA

The American Public Health Association champions the health of all people and all communities. We strengthen the public health profession, promote best practices and share the latest public health research and information. We are the only organization that combines a nearly 150-year perspective, a broad-based member community and the ability to influence policy to improve the public's health. Learn more at [www.apha.org](http://www.apha.org).



800 I Street, NW  
Washington, DC 20001-3710  
202-777-2742  
[www.apha.org](http://www.apha.org)