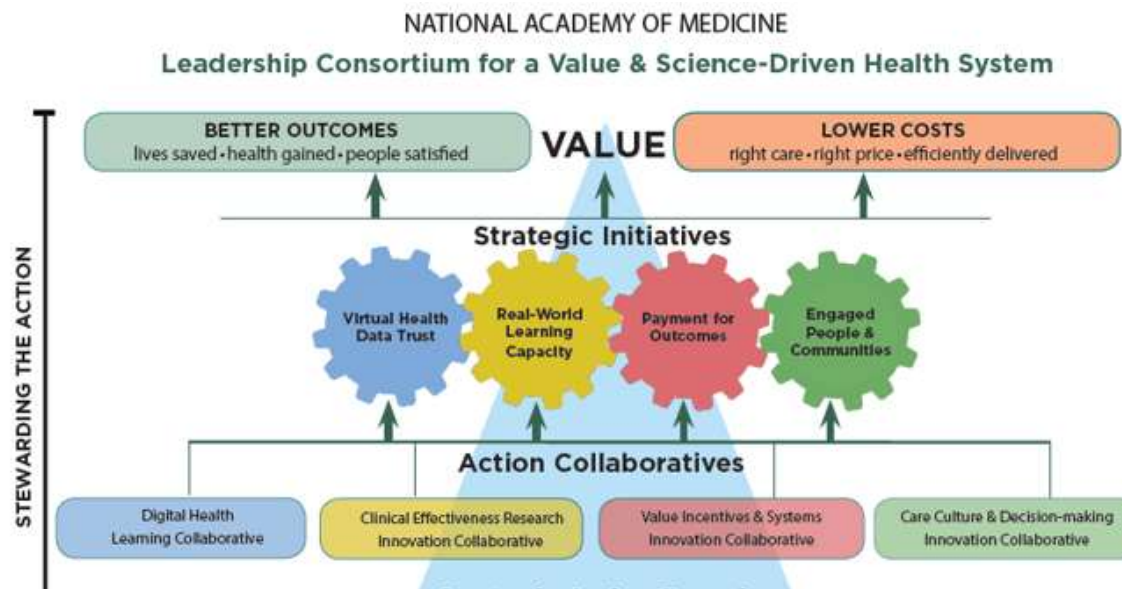


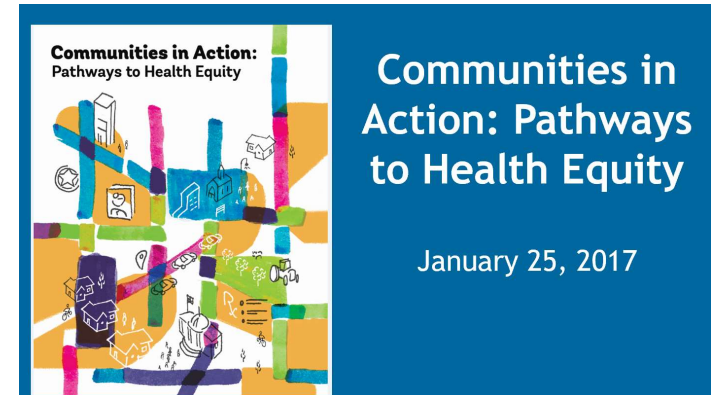
Engaging Allies in the Culture of Health Movement

March 12



Dr. James N. Weinstein
Senior Vice President Microsoft HealthCare
Innovation and Health Equity

Preface



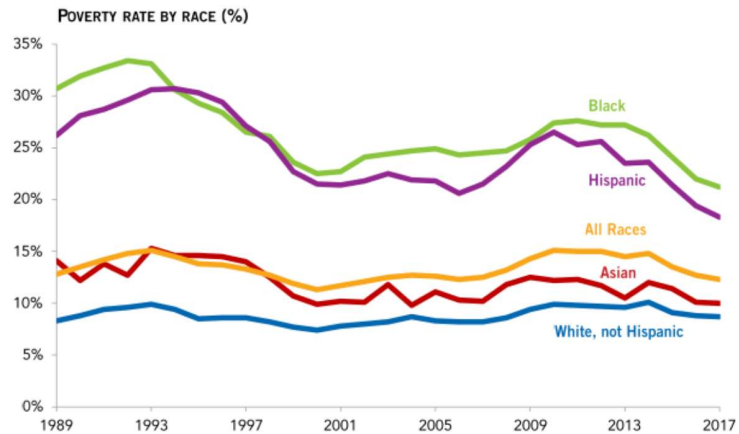
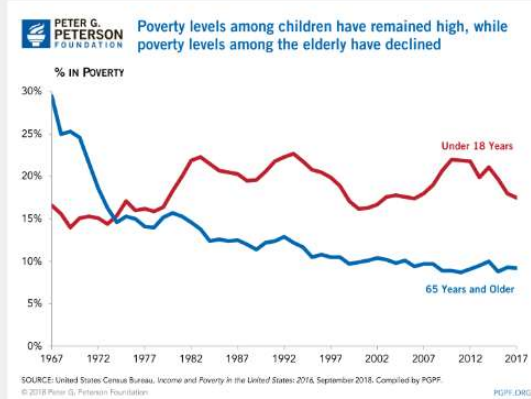
Our founders wrote, that all people are created equal with the right to

“life, liberty and the pursuit of happiness.”

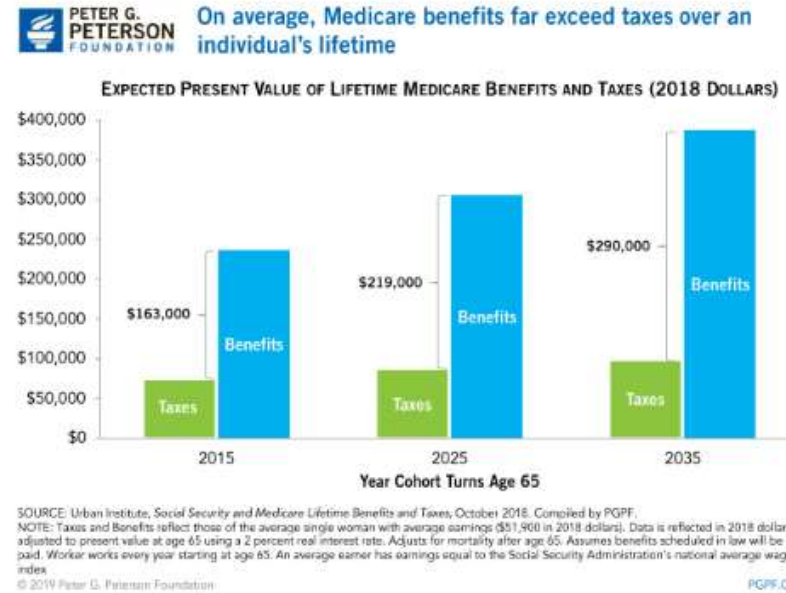
Equality and equal opportunity are deeply rooted in our national values, wherein everyone has a fair shot to succeed with hard work.

The National Academies of
SCIENCES • ENGINEERING • MEDICINE

■ Historical Income by Race



■ Medicare lifetime benefits & taxes by decade of birth



Vital Directions for Health and Health Care Priorities From a National Academy of Medicine Initiative

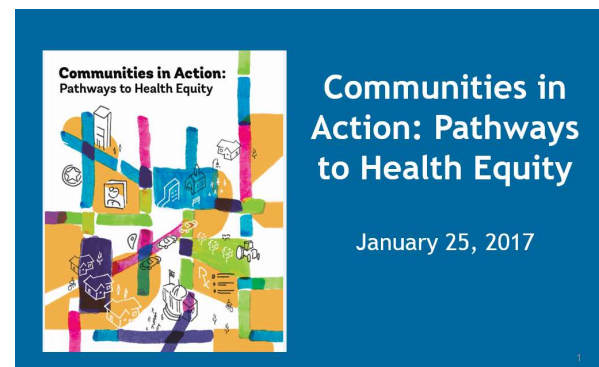
Victor J. Dzau, MD; Mark B. McClellan, MD, PhD; J. Michael McGinnis, MD, MPP; Sheila P. Burke, MPA, RN; Molly J. Coye, MD, MPH; Angela Diaz, MD, MPH; Thomas A. Daschle, BA; William H. Frist, MD; Martha Gaines, JD, LL.M.; Margaret A. Hamburg, MD; Jane E. Henney, MD; Shiriki Kumanyika, PhD, MPH; Michael O. Leavitt, BA; Ruth M. Parker, MD; Lewis G. Sandy, MD; Leonard D. Schaeffer, BA; Glenn D. Steele Jr, MD, PhD; Pamela Thompson, MS, RN; Elias Zerhouni, MD

JAMA. doi:10.1001/jama.2017.1964
Published online March 21, 2017.

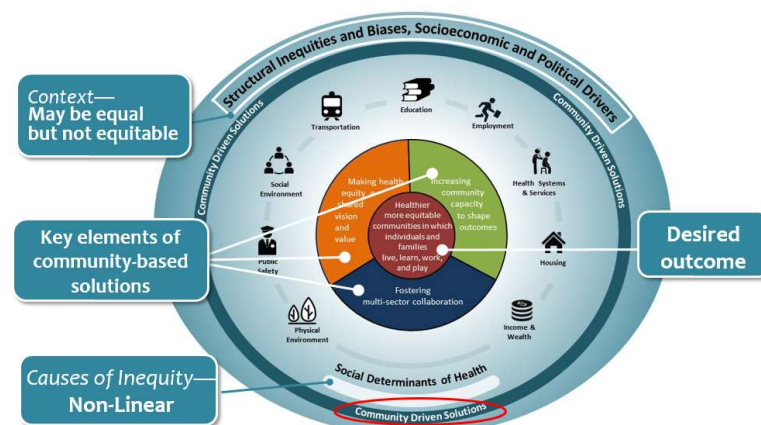
Figure 3. Vital Directions Framework



Achieving the vision of the Vital Directions for Health and Health Care requires focusing on 3 core goals—better health and well-being, high-value health care, and strong science and technology—and pursuing the action priorities and infrastructure needs required for their achievement.



Report conceptual model



The National Academies of
SCIENCES • ENGINEERING • MEDICINE

Health inequities in the U.S.

Opportunity

Infant mortality rates, 2013 select examples

Race/Ethnicity	Infant Mortality Rate (per 1,000 live births)
African Americans	11.1
Native Americans	7.61
Puerto Ricans	5.93
Whites*	5.06

Hospitals blame moms when childbirth goes wrong. Secret data suggest it's not that simple.

A USA TODAY analysis of billing data from 7 million births found about one in eight hospitals have complication rates of at least double the norm.

Alison Young and John Kelly and Christopher Schnaars, USA TODAY

SOURCE: Mathews et al., 2015.

*In 2012, IMR was 7.6 per 1,000 for white infants in the Appalachian region.

Children's Defense Fund, 2016

Note: Infant mortality is one of the indicators of overall health

Why America's Black Mothers and Babies Are in a Life-or-Death Crisis

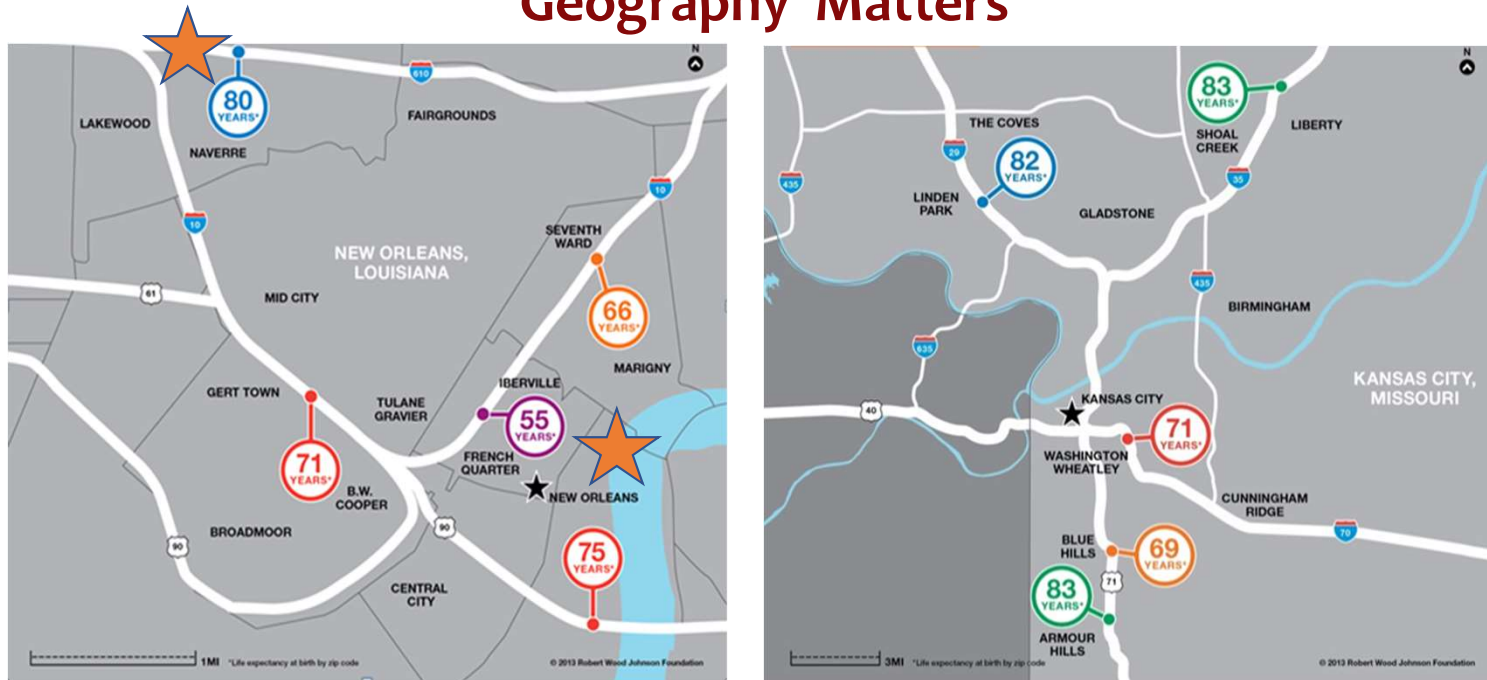
The answer to the disparity in death rates has everything to do with the lived experience of being a black woman in America

By Linda Villarosa NYT

April 11, 2018

Health inequities in the U.S.

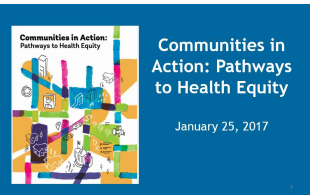
Geography Matters



Life expectancy disparities in New Orleans, LA and Kansas City, MO

SOURCE: RWJF, 2013.

Note: Age adjusted death rates and life expectancy are indicators of overall health



Health inequities in the U.S.

Conclusion 1-1

Health disparities and health inequity have profound implications for the country's overall:

health, economic vitality, and national security.

Addressing health inequity is a critical need that requires this issue to be among our nation's foremost priorities.

- The Urban Institute projects from 2009-2018:
Racial disparities in health cost approximately \$337 billion.
Reducing such disparities would save \$229 billion.
- **75% or 26 Million Americans (ages 17-24) cannot qualify to serve in the Military:** due to persistent health problems (*drugs, prescription and non prescription, poorly educated, convicted of a felony, obesity*).

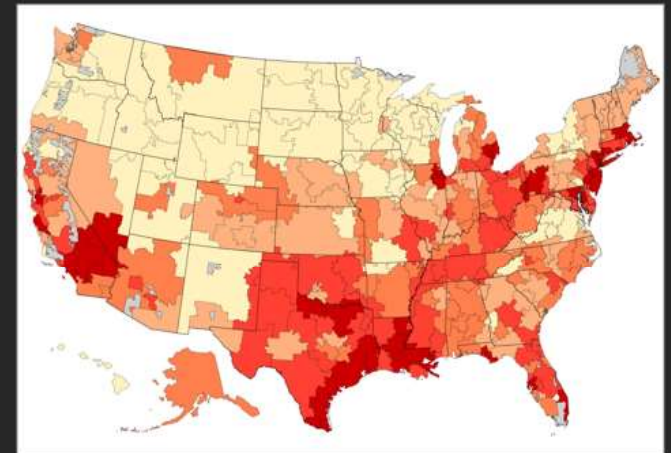
Unmet needs adversely impact people & health systems

21.3M households were cost burdened in 2014

Only 26% of eligible households received federal assistance

Less than 1/3 of hospitals integrate SDoH into EMRs.

These individuals among lowest users of technology



Unmet social needs lead to:

- 2x depression
- 60% more diabetes
- 50% higher cholesterol
- 2x ER visits
- 2x clinic no shows

How do we move beyond Regression to the mean?

Improving Health and Health Care: The Social Determinants

His pain got worse, he went to a doctor, and the pain subsided a little.

Therefore the doctor made his pain better. Oops! Regression to the mean.

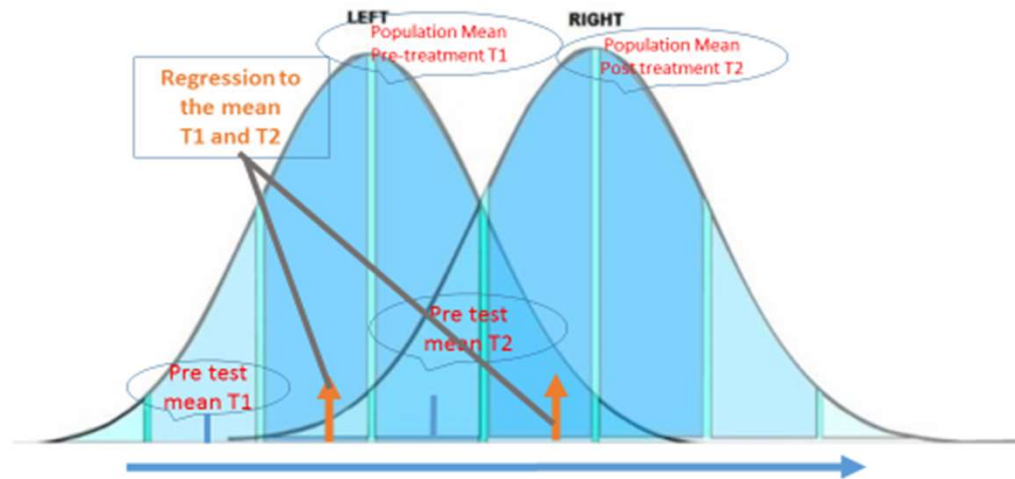


Figure #1

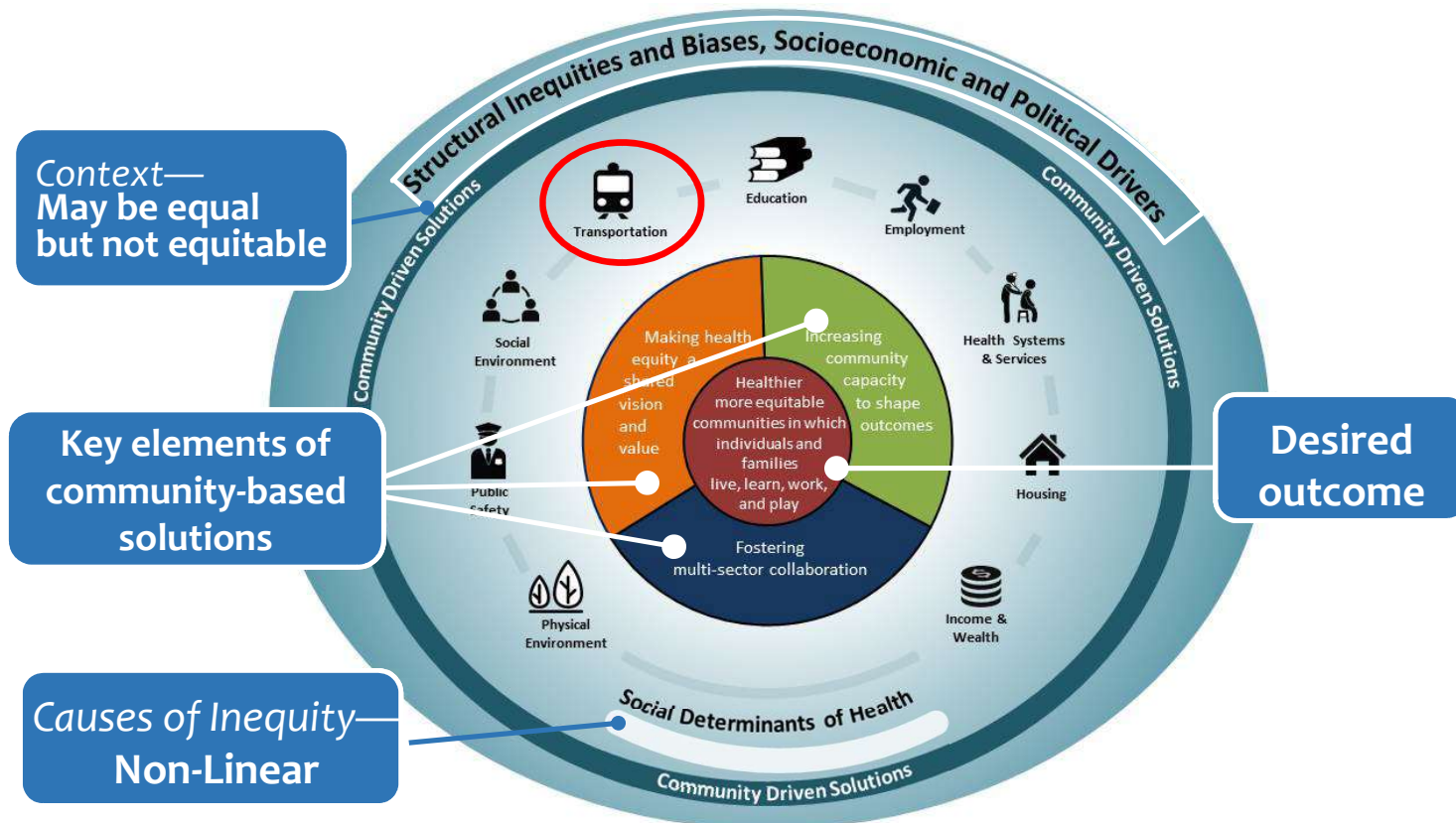
Regression to the mean toward (or to) the mean is the phenomenon that if a variable is extreme on its first measurement, it will tend to be closer to the average on its second measurement—and if it is extreme on its second measurement, it will tend to have been closer to the average.

By addressing the social determinants we can move the whole population mean to the right.





We can all get better!

Report conceptual model

The Community is at the Heart of success









Communities promoting health equity

Name Location	Primary Social Determinant(s) of Health Targeted, Data on outcomes *
Blueprint for Action Minneapolis, MN 	Public safety 2007 -2015 Preventing youth violence: Results = Reductions reported 62%↓ in youth gunshot victims; 36%↓ youth victim crimes; 76%↓ youth arrest with guns
Delta Health Center Mound Bayou, MS 	Health systems and services From 2013 -2015 Low birth weight babies decreased from 20.7% to 3.8%
Dudley Street Neighborhood Initiative Boston, MA 	Physical environment 2014 -2015 % HS students at or above grade level : Math from 36% to 63% Graduation Rate 51% to 82% Percent enrolled in college 48% to 69%
Eastside Promise Neighborhood San Antonio, TX 	Education Child care available 80% to 100% Work with others to improve neighborhood 58% to 83% Safe places for Kids 48% to 67%

*Data as reported by the communities

Communities promoting health equity

Name Location	Primary Social Determinant(s) of Health Targeted, Data on outcomes*
Indianapolis Congregation Action Network <i>Indianapolis, IN</i> 	Employment; Public safety 76% more civic duty than avg. resident Reduction in incarceration and increased jobs
Magnolia Community Initiative <i>Los Angeles, CA</i> 	Social environment 2016 57% children 0-5 had access to place vs ER 78% graduated from H.S. ; 45% College 75.7% report feeling safe, to and from school
Mandela Marketplace <i>Oakland, CA</i> 	Physical environment 641,000 lbs. of produce; 76%  consumption \$5.5 M new revenue; 26 + job ownership opportunities-- sustainability
People United for Sustainable Housing <i>Buffalo, NY</i> 	Housing Regional mapping process: # of employed workers, # housing units for redeveloped, carbon emission reduction; utility bills
WE ACT for Environmental Justice <i>Harlem, NY</i> 	Physical environment New policies around air quality, use of harmful chemicals, pesticides, flame retardants

*Data as reported by the communities

May 21, 2018

0

Like



AFFORDABLE HOUSING FINANCE

Kaiser Permanente Announces \$200 Million Affordable Housing Investment

The company sees housing as a way to advance its mission to provide health care.



“Affordable housing will be a significant focus of Kaiser Permanente’s impact investing portfolio to generate housing stability and improve health outcomes,” said Bernard J. Tyson, chairman and CEO of Kaiser Permanente. “We hope our commitment creates a broader national conversation on homelessness, and encourages other companies to join with us to advance economic, social, and environmental conditions for health.”

https://www.housingfinance.com/news/kaiser-permanente-announces-200-million-affordable-housing-investment_o



Khalid Naji-All

Muriel Boswer, mayor of Washington, D.C., announces the launch of the Mayors & CEOs for U. Housing Investment in January. The coalition is advocating for federal investment in affordable housing and homeless services.

U.S. mayors representing 13 million Americans joined with a set of powerful business leaders to launch [Mayors & CEOs for U.S. Housing Investment](#) to advance public-private

NEWS

[HOME](#) > [NEWS](#) > MAYORS, CEOS LAUNCH HOUSING COALITION

February 02, 2018

0

Like



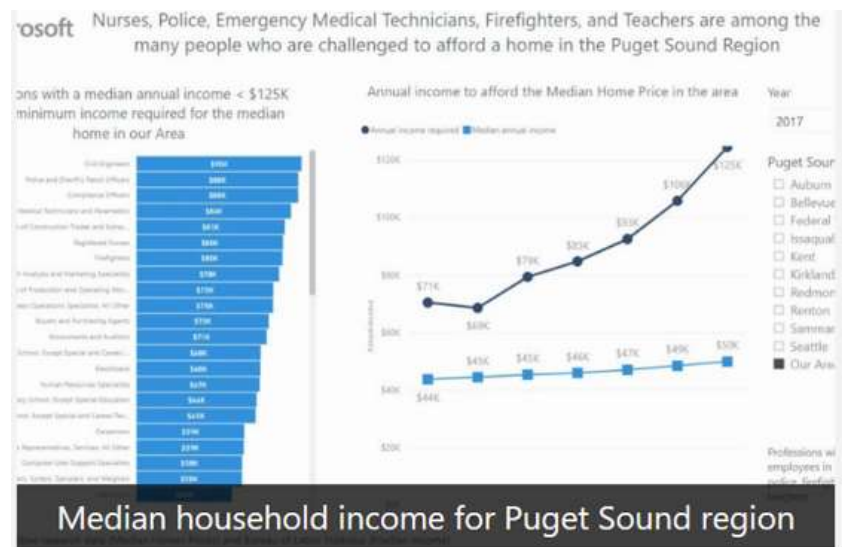
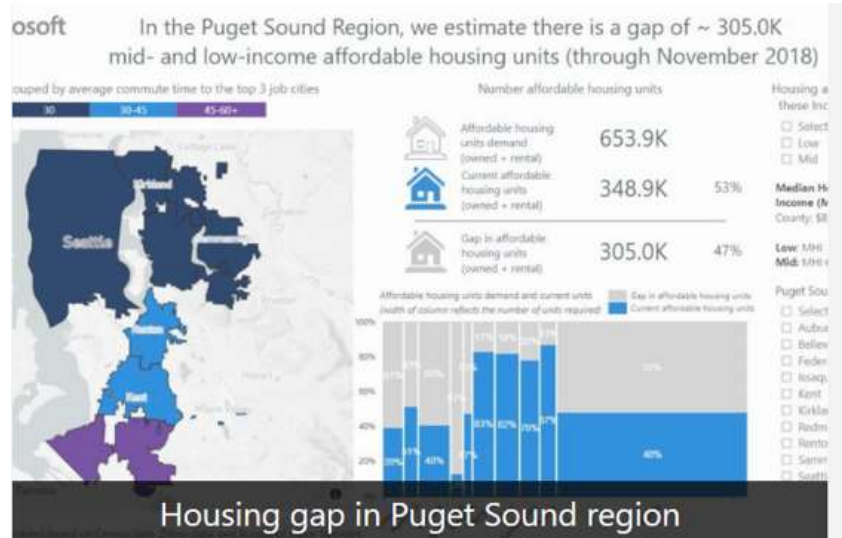
AFFORDABLE HOUSING FINANCE

Mayors, CEOs Launch Housing Coalition

The new group calls for policy changes, investment in affordable housing.

By [Donna Kimura](#)

https://www.housingfinance.com/news/mayors-ceos-launch-housing-coalition_o



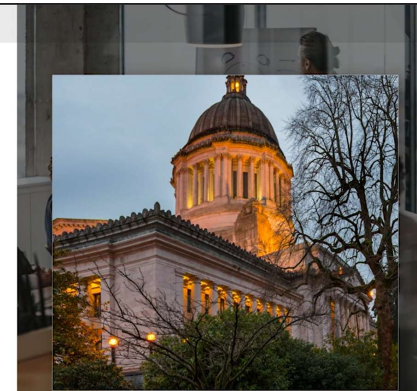
Business | Eastside | Microsoft | Project Homeless | Real Estate

Microsoft pledges \$500 million to tackle housing crisis in Seattle, Eastside

Originally published January 16, 2019 at 6:00 pm | Updated January 24, 2019 at 2:37 pm

<https://news.microsoft.com/affordable-housing/#on-demand-video>

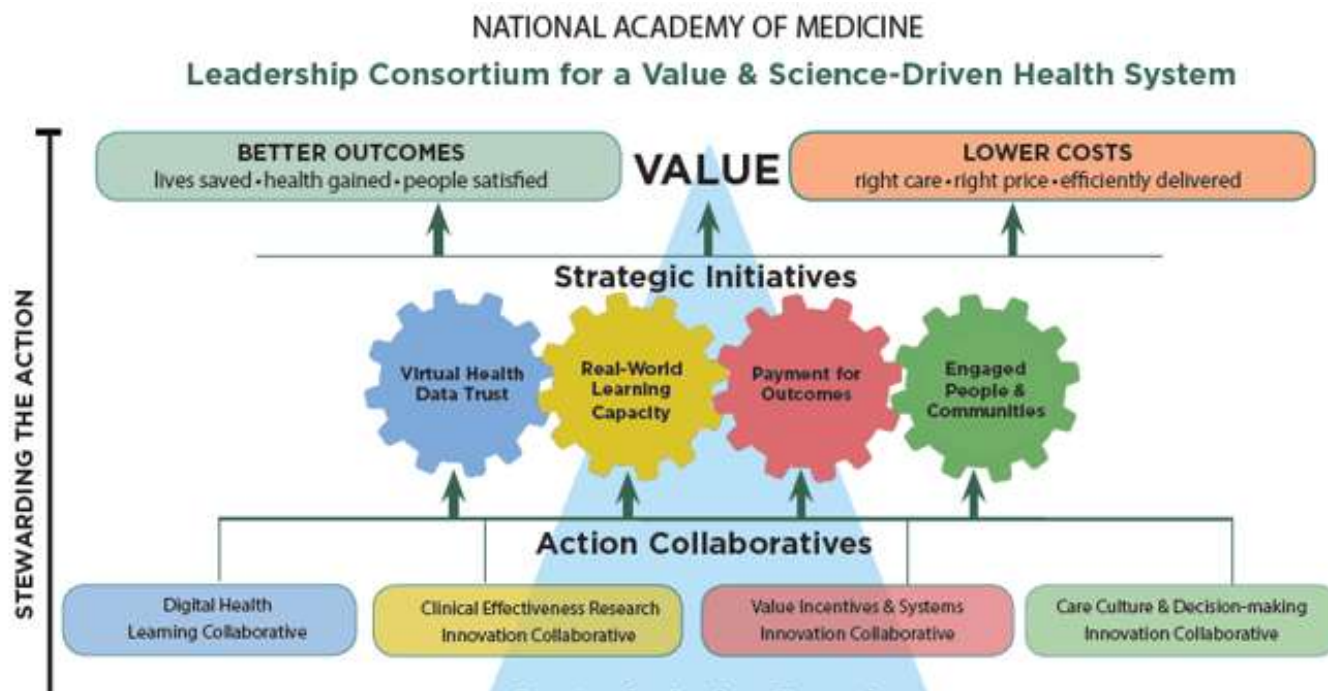
PUBLIC POLICY



Questions to consider throughout the day

In order to advance health Inequity and advance a culture of health:

1. What have you seen or heard today that you can use or take back to your institution or member network?
2. How would you envision advancing the science behind the anchor mission approach to be most beneficial for communities?
3. What regulations might be changed to allow you more ability to make the necessary community investments to improve the SDOH of the populations you serve?
4. What can you commit to doing today, as an engaged anchor institution?
5. Are there questions still unanswered for you? What do you still need to know?



Engaging Allies in the Culture of Health Movement

March 12