

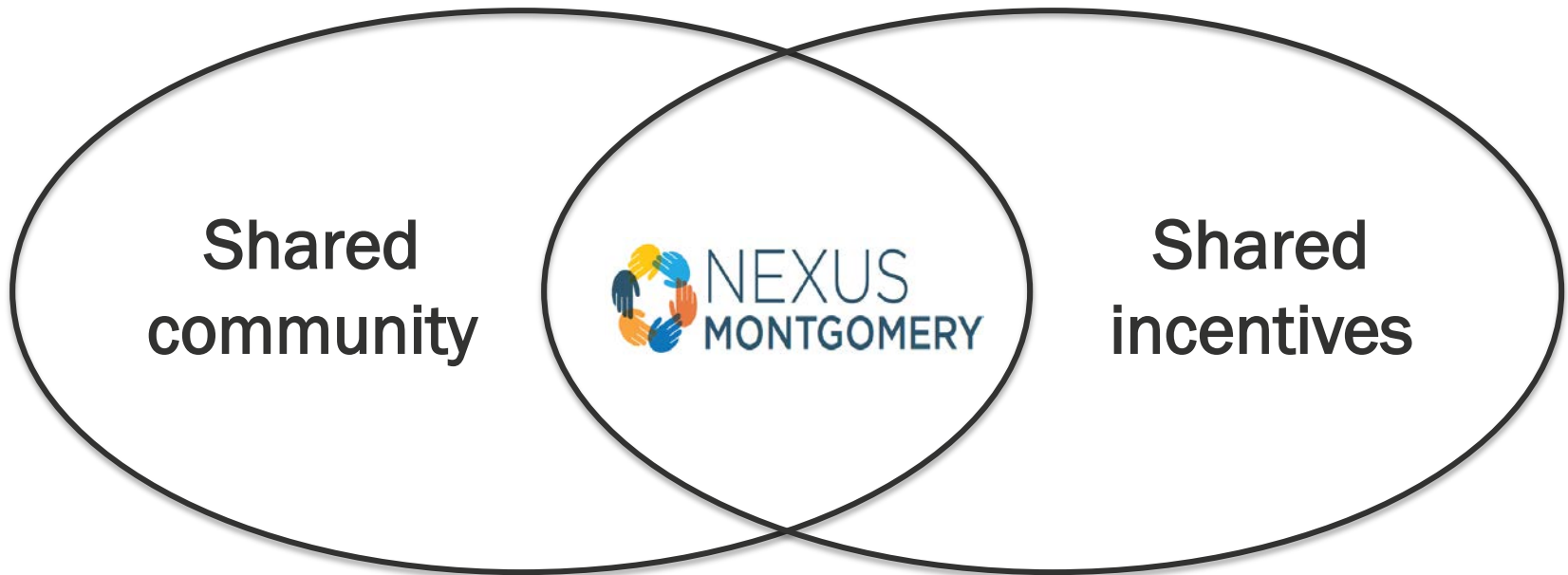
# Nexus Montgomery Regional Partnership

Annice Cody

Chair, Board of Managers



# NEXUS MONTGOMERY REGIONAL PARTNERSHIP



# MARYLAND ALL-PAYER WAIVER REQUIREMENTS

- Control growth of per capita hospital spending
- Reduce Medicare hospital spending by \$330 million
- Keep Medicare total spending per beneficiary below national growth rate
- Reduce hospital readmissions
- Reduce infections and other complications



Global budgets for all hospitals



Penalties and rewards

# A UNIQUE PARTNERSHIP

- Montgomery County hospitals working together to improve health and reduce unnecessary care
- 15 months developing structure and interventions
- Governed by a joint venture LLC
- Funded with a .5% increase in allowable revenue (\$7.7 M) beginning in summer 2016

# NEXUS MONTGOMERY INITIATIVES

## Avoid Hospitalizations

- Wellness and Independence for Seniors at Home
- ACT Team
- Crisis House

## Reduce 30-day Readmissions

- Specialty Care for Uninsured Patients
- Hospital Care Transitions
- Respite Beds for Homeless Patients

## Manage Total Cost of Care

- SNF Alliance
- Advance Care Planning
- Community Physician Engagement

# PARTNERSHIP IS KEY



primary care coalition

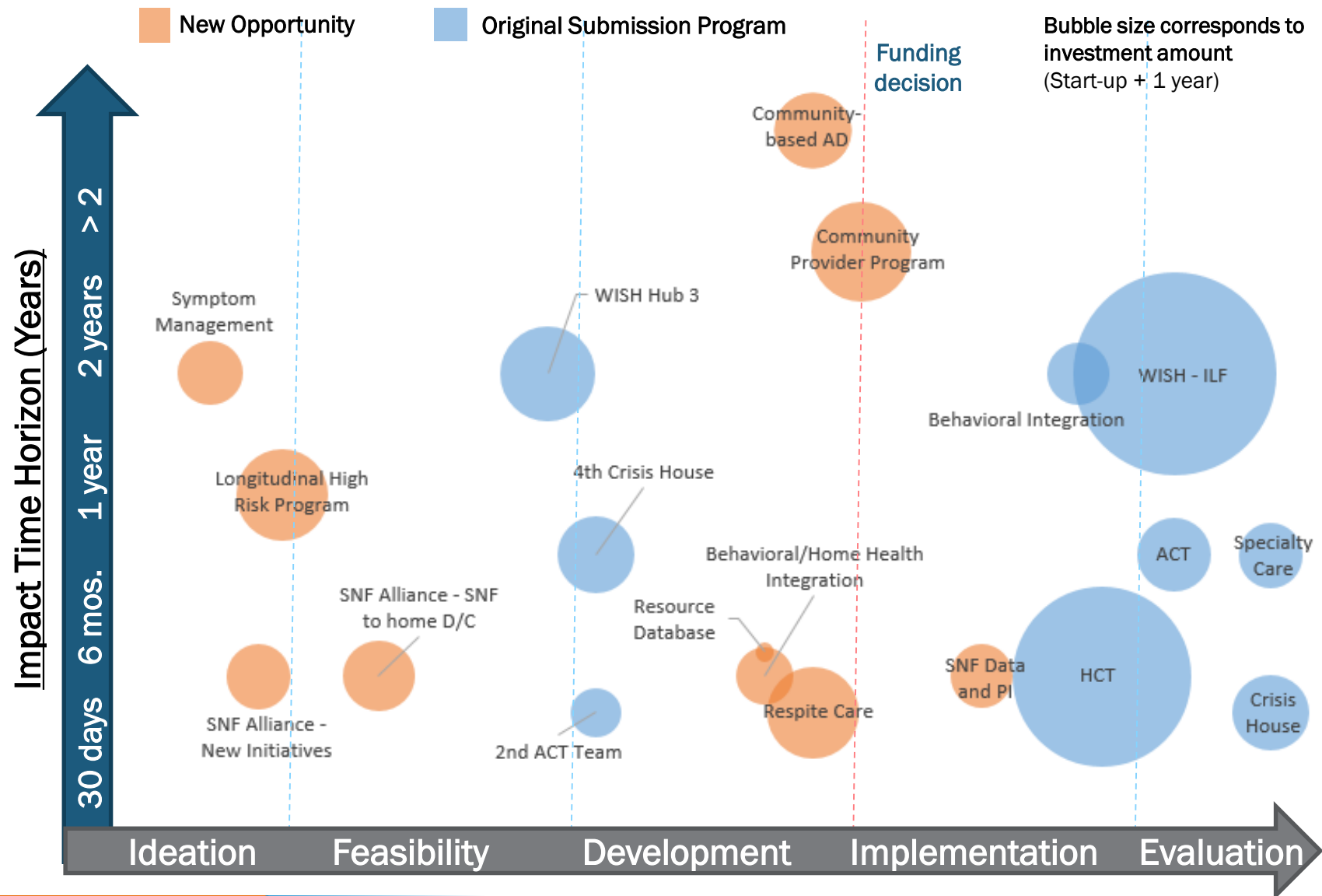
30+ SNFs

42 Independent Living Facilities

200 community physicians



# PROGRAM PIPELINE SUPPORTS PORFOLIO MANAGEMENT



# EVALUATION

## Target group results

- Number of uninsured individuals receiving specialty care
- Observed to expected readmission rate ratio
- 30-60-90 day pre/post utilization costs

## Population-based results

- Utilization rates and total cost of care for all residents of independent living facilities
- Hospital spending for individuals with severe mental illness
- Total cost of care for population attributed to each hospital