

How can a NAM Working Group help us reach the promised land sooner?
(and safely)

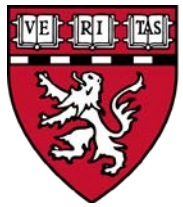
Leonard D'Avolio PhD, ldavolio@cyft.com



Cyft.



BRIGHAM AND
WOMEN'S HOSPITAL



HARVARD
MEDICAL SCHOOL

THE LEONA M. AND HARRY B.
HELMSLEY
CHARITABLE TRUST



T1D Exchange

DATALOGUE

ydo

Youth Development
Organization



**FIREFLY
HEALTH**

1. Education

Machine learning is a tool, not a sentient being.



Analytics

Machine learning will replace human radiologists, pathologists, maybe soon

As artificial intelligence, cognitive computing and machine learning systems become better than humans at medicine and cost less, it might even become unethical not to replace people.

By [Tom Sullivan](#) | May 15, 2017 | 03:46 PM



KNOW
how to triple your shared savings

athenahealth

HIMSS Health IT Value Suite

Maximize health IT ROI with HIMSS Pathways to Value.

Find out how!

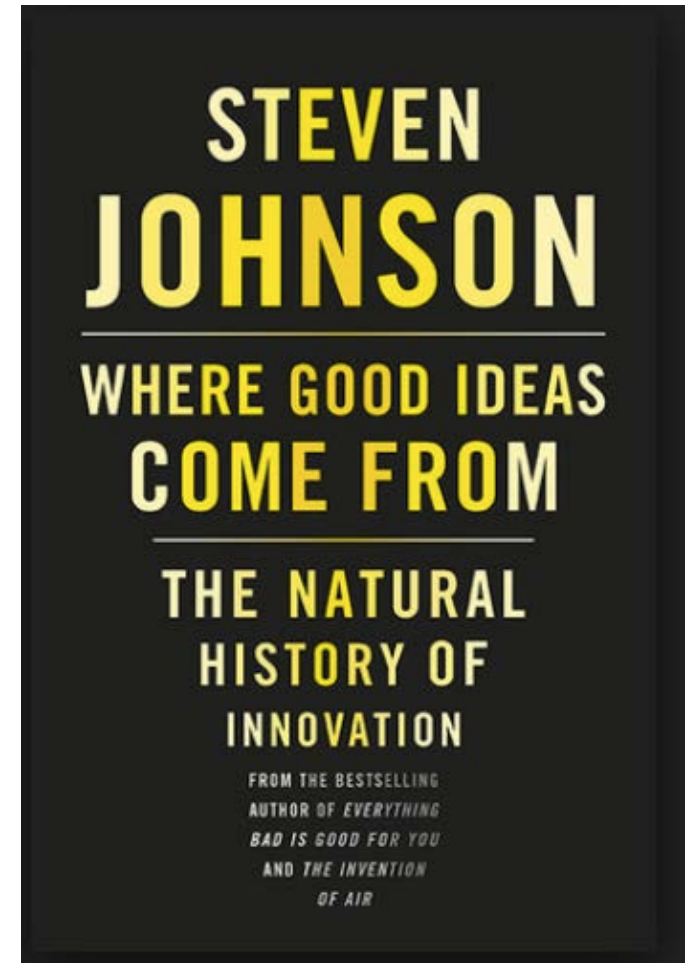
AI is cool.

People and process improve care.

Can NAM Working group focus on best practices?

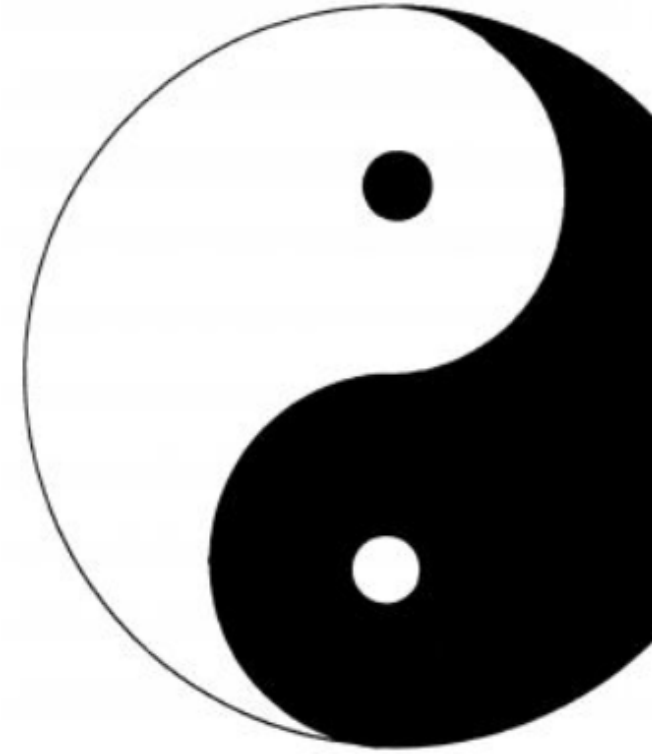


Machine learning represents a new epistemology.



2. Interpretability

- Trade off performance for familiarity?
- Focusing people on the wrong issues?



3. Data Access & Quality

- Have we swung too far?
- Data as raw material



4. Sociotechnical

- Unintended consequences
- Introduction of inequity

5. Evaluation

- At what level?
- Appropriate use of methods

6. Data will make our understanding smaller

- Asthma example
- Help healthcare adapt to this

7. Regulation

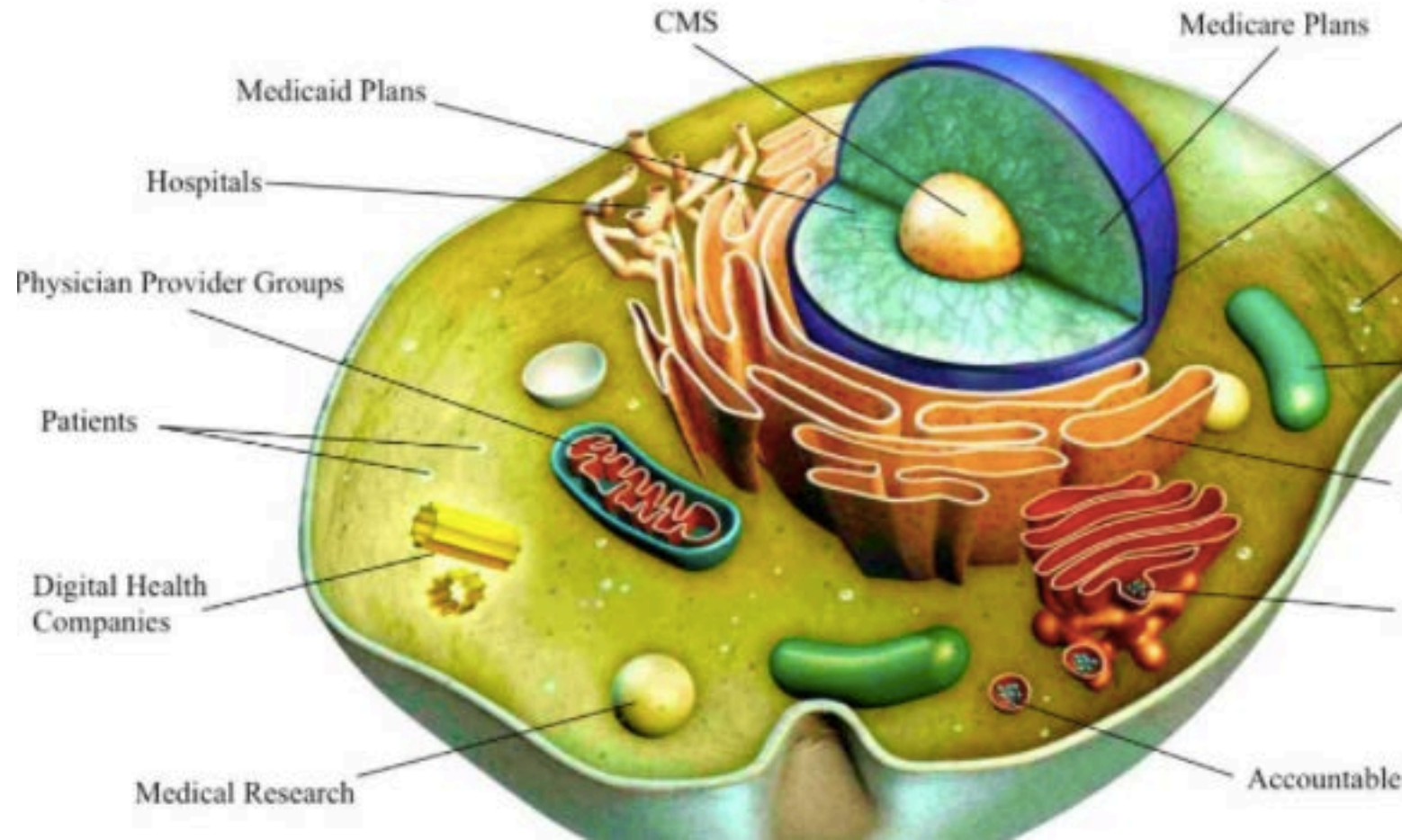
- Algorithm, data, process?
- Dynamic nature
- Personalization



8. Where to focus? (incentives are everything)

The \$3.2T healthcare industry

- Incentives dictate
- VA = palliative care, suicide, opioid
- Hospitals = sepsis prevention



PANDORA®

amazon



TARGET



Google



Spotify®



@teenybiscuit