

Kaiser Permanente: National Guideline Program & Multiple Chronic Conditions

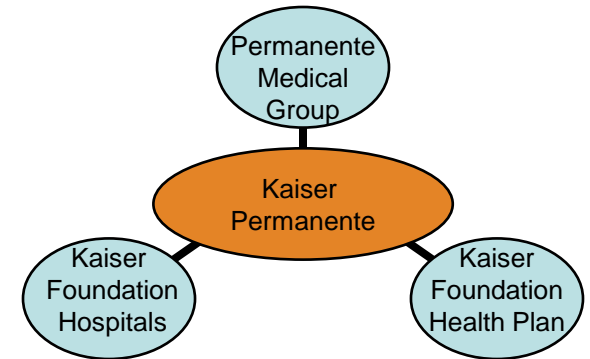
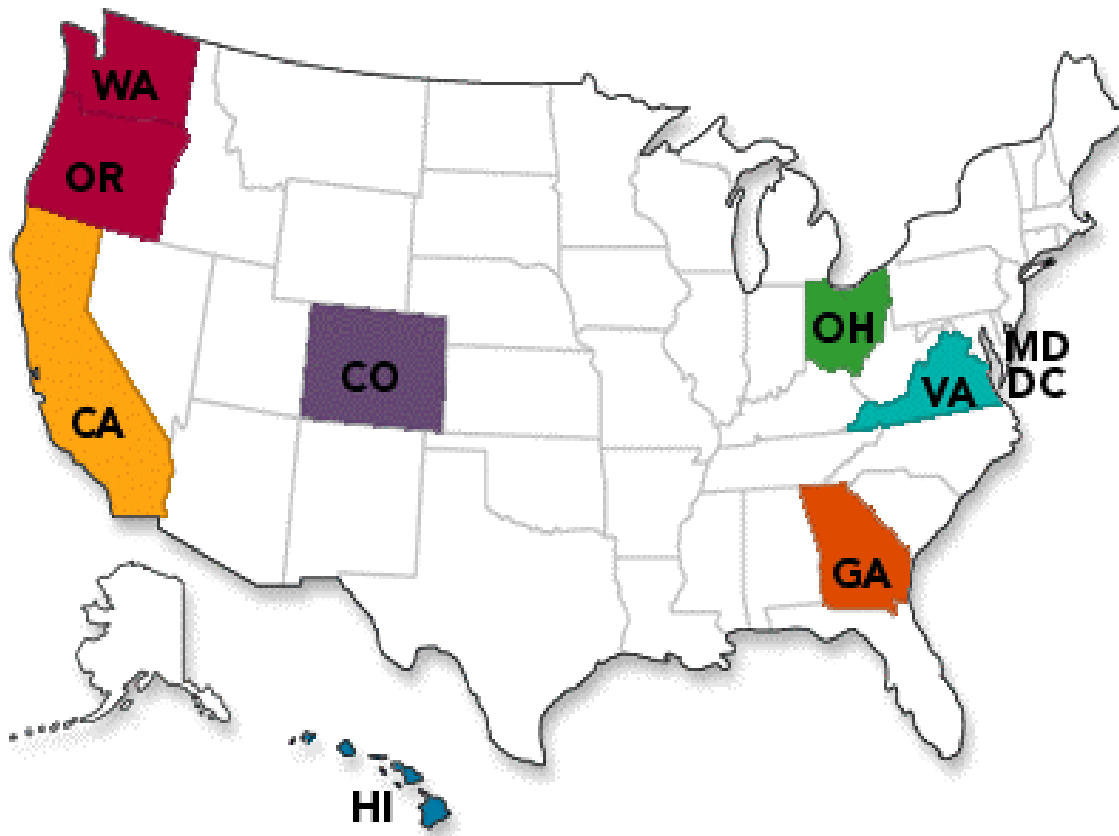
May 29, 2012

Craig W Robbins, MD, MPH

Medical Director, Evidence Based Practice

care management | institute

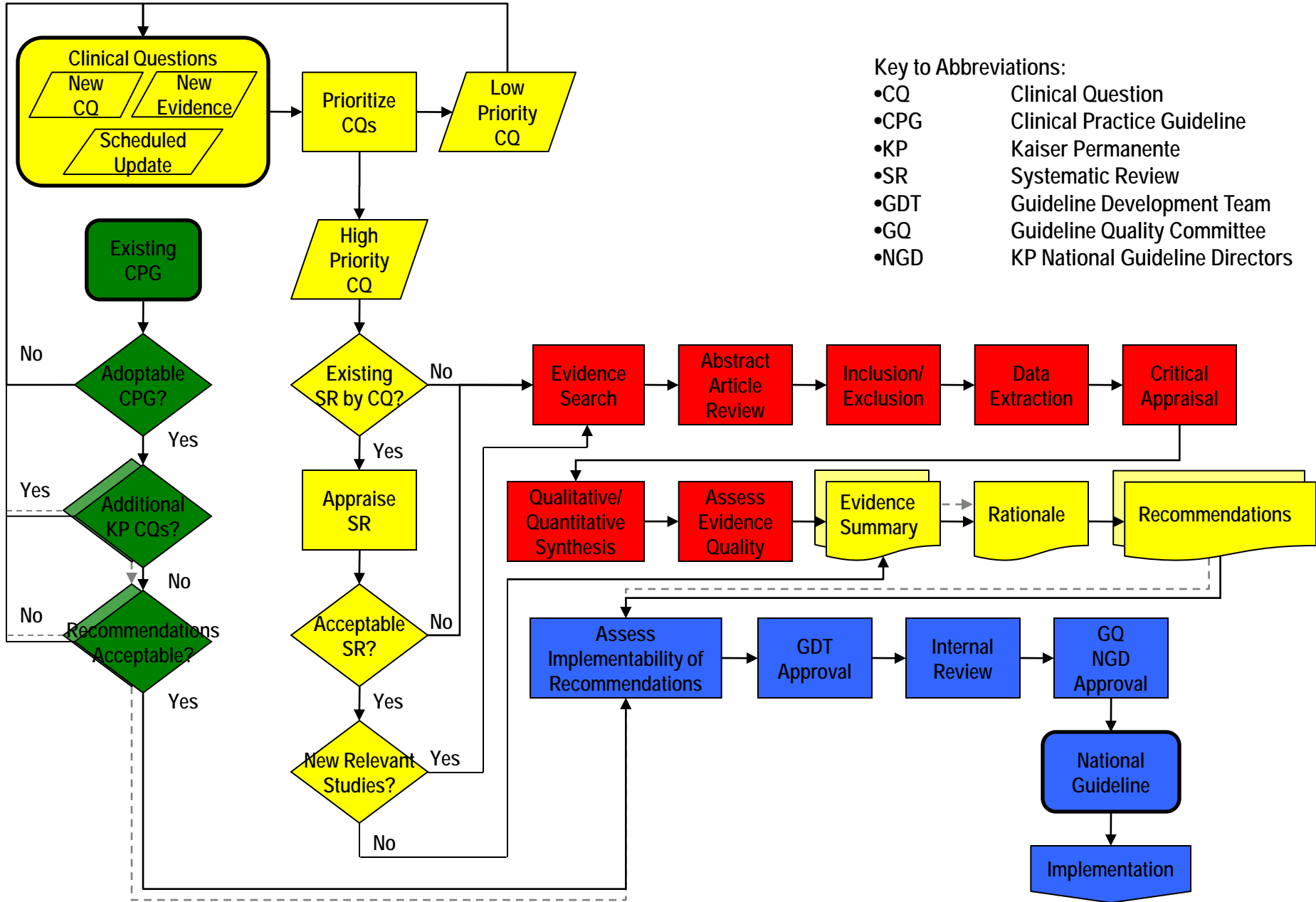
Kaiser Permanente: Largest Non-Profit Health Care Program in the United States



- Founded in 1945
- 8 regions in 9 states and District of Columbia
- 9 million members
- 14,000 physicians
- 160,000 employees
- KP Care Management Institute (CMI)
- KP National Guideline Program (NGP)

Slide 2

Kaiser Permanente National Guideline Program: Process & Methodology



KP CVD-related Guidelines

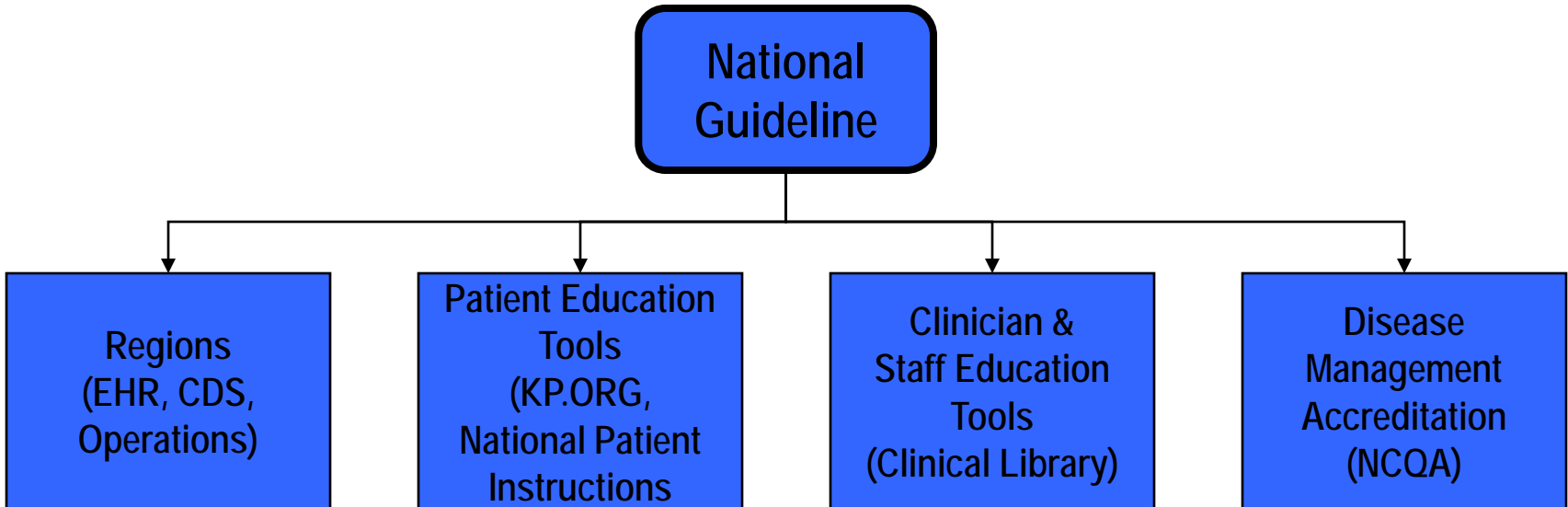
- CAD, DM, HTN, Dyslipidemia
- Increased scope of individual guidelines
- Problems:
 1. Inefficiencies
 2. Inconsistencies
 3. Gaps
 4. Out-of-scope issues

ICVD Risk Reduction Guideline

- A recommendation on a given topic will be addressed only once.
- Will ensure that all relevant GDT members review the same literature at the same time.
- This guideline will be the comprehensive primary and secondary prevention guideline for CVD.
- Disease-specific guidelines will be reconstituted from the relevant problem formulations (ICVD Guideline + disease-specific topics).

Kaiser Permanente National Guideline Program: Process & Methodology

➤ Guideline Implementation



Key to Abbreviations:

- EHR Electronic Health Record
- CDS Clinical Decision Support
- KP.ORG KP publicly-accessible Internet site
- NCQA National Committee for Quality Assurance