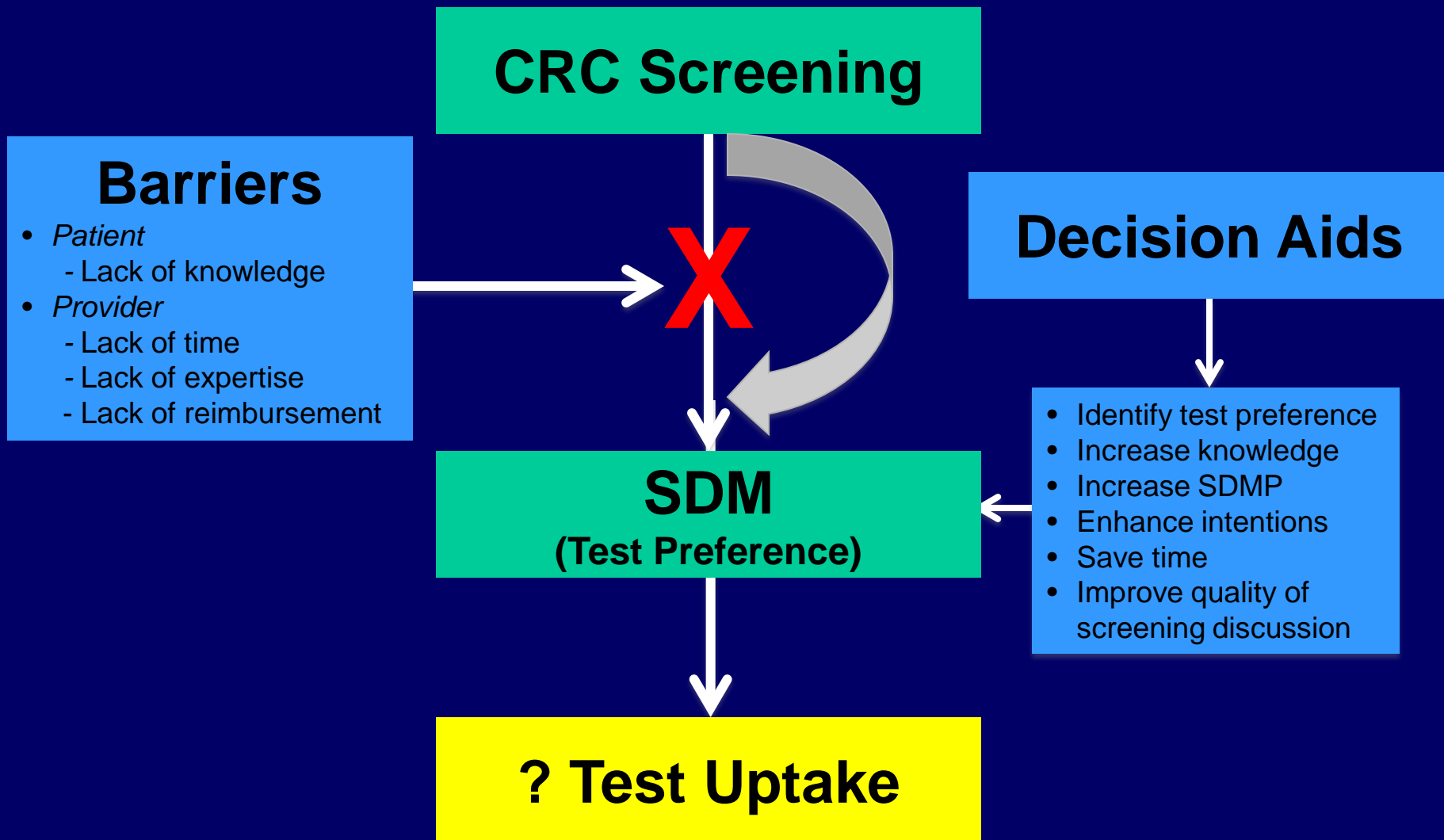
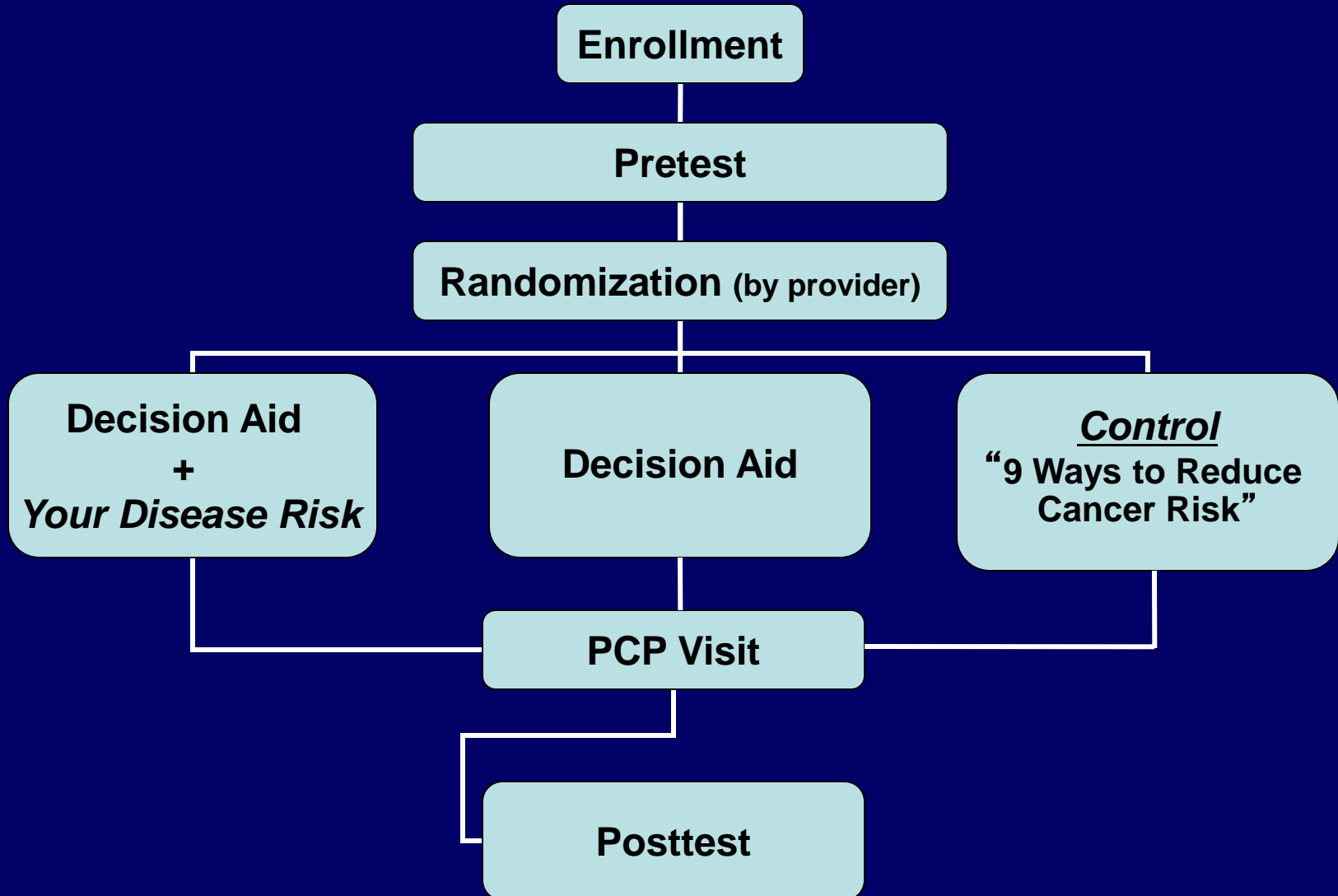


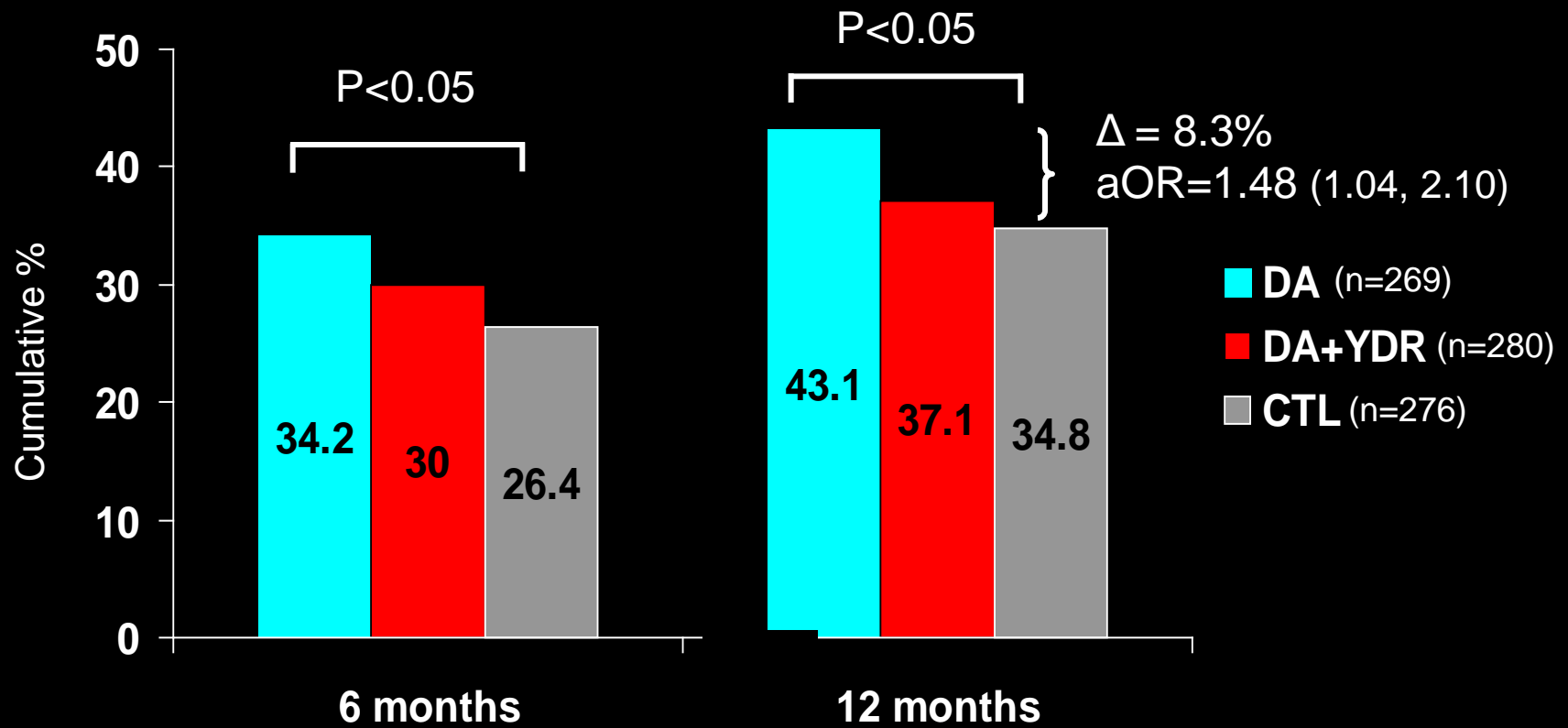
SDM and CRC Screening



Randomized Trial Design



Test Completed



Concordance Between Patient Preference and Test Ordered/Completed (Intervention Groups Only)

	Same	Different	None
Test Ordered			
Overall	61%	17%	21%
Colonoscopy	80% *	4%	15% *
Other	31%	38%	31%
Test Completed			
Overall	51%	58%	---
Colonoscopy	53%	50%	---
Other	40%	60%	---

Colonoscopy vs. Other, $P < 0.001$

Mediators of Intervention Effect on Test Completion (12 months)

