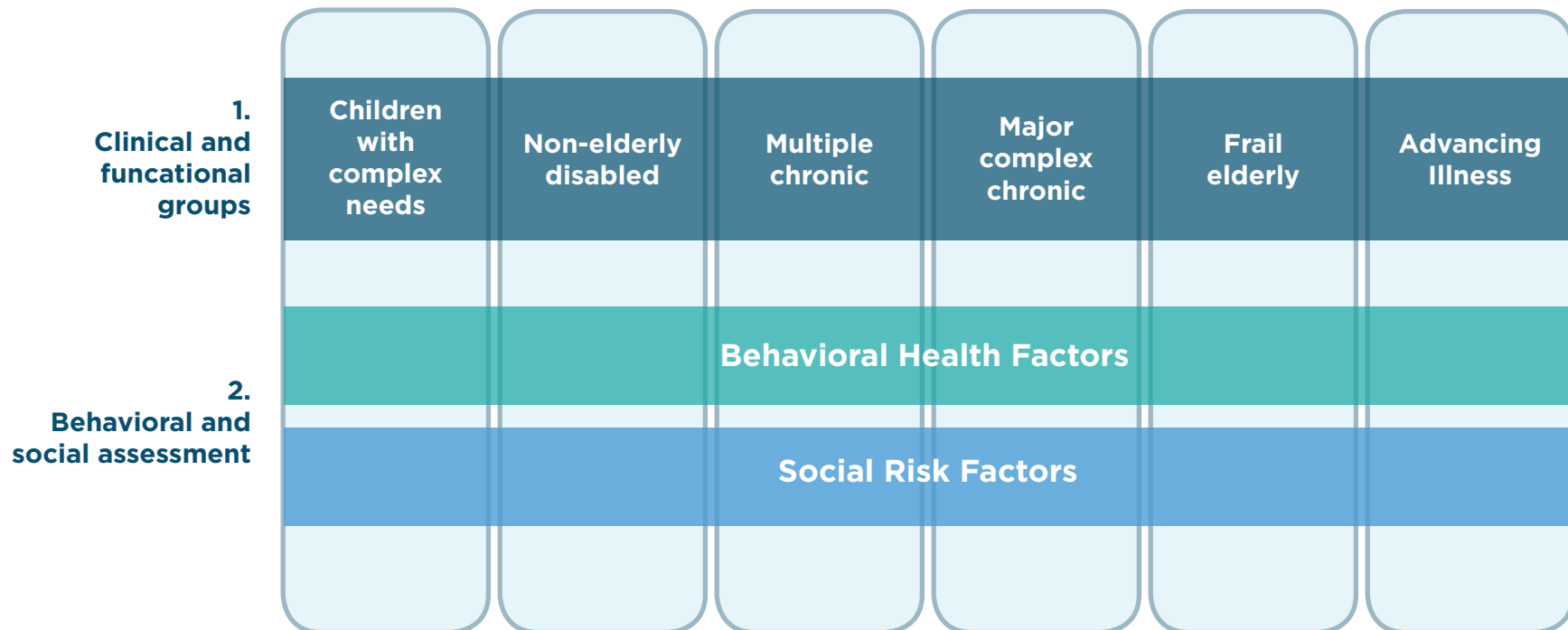


Conceptual Model of a Starter Taxonomy for High-Need Patients

from Effective Care for High-Need Patients: Opportunities for Improving Outcomes, Value, and Health



Note: For this taxonomy, functional impairments are intrinsically tied to the clinical segments.

Understanding how to effectively care for high-need patients requires knowing which factors drive health care need. Because this patient population is heterogeneous, those factors will differ for different segments of the population. Therefore, a taxonomy that segments individuals in a health system's population based on the care they need as well as how often they might need it can help determine how to serve that population more effectively.

Download the full report for guidance on the adoption and application of key elements of a patient taxonomy in practice.