



AcademyHealth

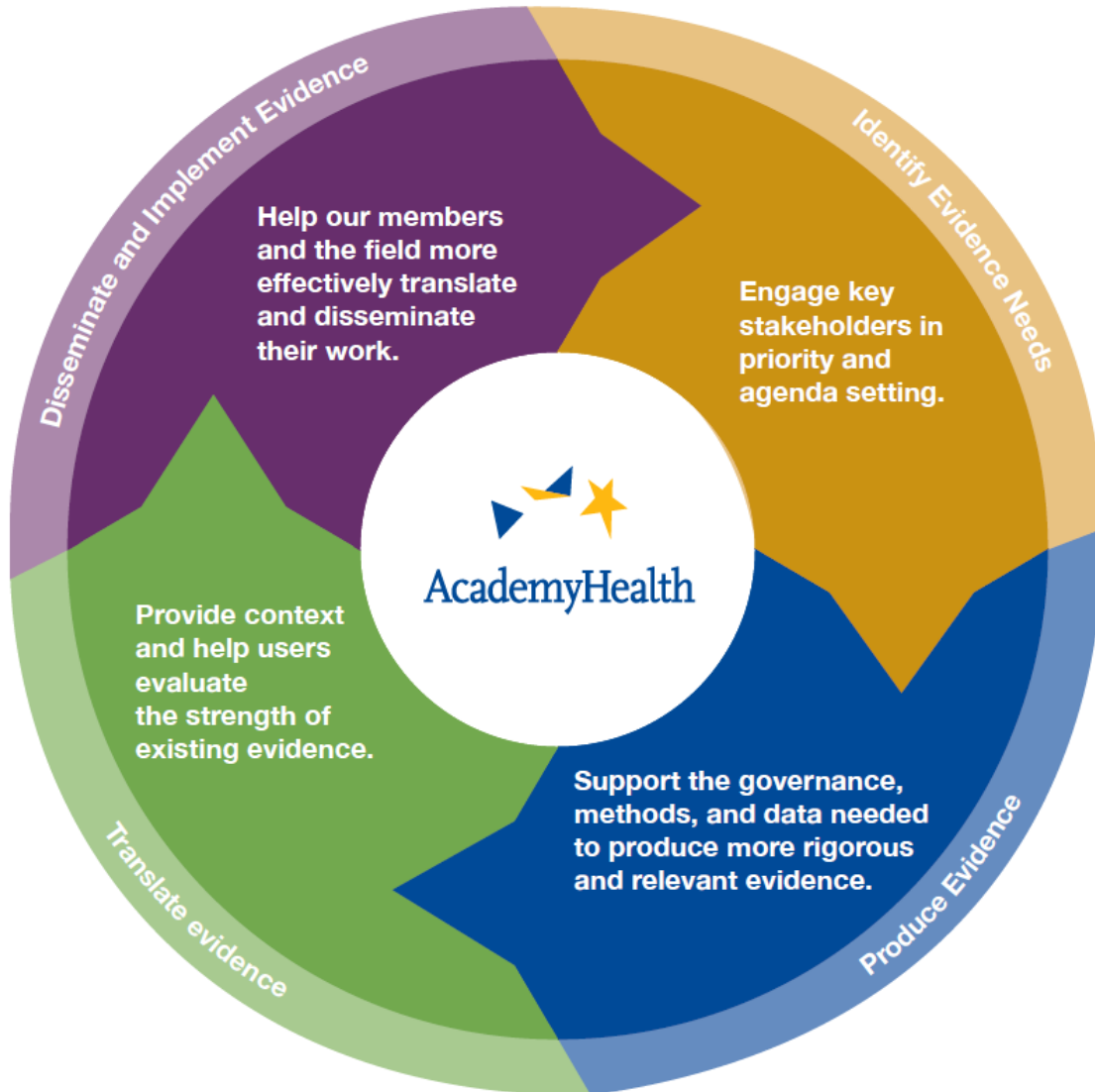
Evidence Generation in a Learning Health System: *Enhancing Clinician Engagement*

Lisa Simpson, MB BCh, MPH
April 20, 2016

Key Points

- Clinician engagement must be throughout the evidence lifecycle, not just its generation
- The nature of the engagement differs with the clinician's role
- The evidence generated will need to focus beyond the clinical encounter
- Multidisciplinary training is essential
- Opportunities for clinicians to conduct embedded research and join communities of practice are important

Clinician engagement must be throughout the evidence lifecycle



The nature of the engagement differs with the clinician's role

→ All

- Aligning research priorities
- Collecting & interpreting data & evidence
- Design of results feedback/user interfaces, inc. data visualization
- Engaging patients

→ Leadership

- Data & research stewardship
- Facilitating & rewarding clinician engagement

The evidence generated will need to focus beyond the clinical encounter

- Increasing focus on
 - Population health & upstream factors
 - Payment reform
 - Overuse/low value care
- Data/evidence on role of
 - Patient/family context
 - Social determinants
 - Costs

Key Points

- Clinician engagement must be throughout the evidence lifecycle, not just its generation
- The nature of the engagement differs with the clinician's role
- The evidence generated will need to focus beyond the clinical encounter
- **Multidisciplinary training is essential**

AcademyHealth Scholarships & Fellowship

- 13 opportunities for students, early-, mid- and senior career
- Most linked to attendance at national meetings, e.g.
 - Population Health Scholars
 - Diversity Scholars Network
 - Presidential Scholars
- Six intramurally funded; seven via grants/partnerships

Key Points

- Clinician engagement must be throughout the evidence lifecycle, not just its generation
- The nature of the engagement differs with the clinician's role
- The evidence generated will need to focus beyond the clinical encounter
- Multidisciplinary training is essential
- Opportunities for clinicians to conduct embedded research and join communities of practice are important

AcademyHealth Delivery System Science Fellowship (DSSF)

- Paid post-doctoral experience for researchers to conduct health services research (HSR) in delivery system settings
 - Broad support from employers and educators in the field: 2009 Summit & 2011 HSRLC strategic plan
 - Led by an advisory committee of nationally-recognized experts in the field.
 - Aims to develop the Fellows' skills and knowledge base, career opportunities, and professional network among learning health systems.
 - Provides hands-on training and professional opportunities for highly qualified researchers with a background in HSR or related fields



Successful Cohorts Since 2013

- A pool of high-caliber candidates to date:
 - 118 applications received
 - 21 candidates have been selected as Fellows, of which:
 - 5 are currently conducting their Fellowship
 - 16 have completed the year-long Fellowship
 - Host sites are currently in the process of interviewing candidates for the 2016 cohort.
- Applicants range from junior and mid-career researchers to seniors researchers desiring a shift in career focus.



Partnering DSSF Health Systems

- Over the course of five years, AcademyHealth has partnered with 13 prestigious nationwide health systems including:
 - Cincinnati Children's Hospital Medical Center,
 - Cleveland Clinic,
 - Geisinger Health System,
 - Hofstra North Shore-LIJ School of Medicine,
 - Intermountain Healthcare,
 - Kaiser Permanente Southern California,
 - Mayo Clinic,
 - Medica Research Institute,
 - New York University Langone Medical Center,
 - Palo Alto Medical Foundation Research Institute,
 - Providence Health & Services,
 - University of California Center for Health Quality and Innovation, and
 - U.S. Department of Veterans Affairs Quality Enhancement Research Initiative (QUERI) and Health Services Research and Development Service (HSR&D).



DSS Fellows

- Fellows stem from a wide range of academic and clinical backgrounds with expertise in areas such as:
 - epidemiology
 - organizational behavior
 - anthropology
 - clinical medicine
 - health informatics
 - systems engineering



2016 Workforce Summit

- **Assess the current health services research (HSR) workforce**
 - Overview of workforce makeup
 - Current HSR training capacity
 - HSR field's "ecosystem"
- **Identify future demand for research**
 - Ways to increase HSR workforce diversity and equity
 - Overview current and project the future status of team-based research (team science)
- **Create an action plan** for the education of health services researchers, including recommendations for life-long learning
- **Share the Strategy**
 - Disseminate an action plan to relevant stakeholders, using a variety of channels and products tailored to different audiences



Communities of Practice & Networks

- Long history
 - From PBRNs → PCORNet
- PopCOP – Population Health Community of Practice
- DALHS – Data and Analytics for a Learning Health System
- MMDN – Medicaid Medical Directors Network



cielo

An open access environment for health analytics

login or join

bjohnson

Remember Me

login

join

[Forgot password](#)

explore, contribute, and collaborate in a safe, open access environment for health data and code



explore



contribute



collaborate

Key Points

- Clinician engagement must be throughout the evidence lifecycle, not just its generation
- The nature of the engagement differs with the clinician's role
- The evidence generated will need to focus beyond the clinical encounter
- Multidisciplinary training is essential
- Opportunities for clinicians to conduct embedded research and join communities of practice are important

Questions?

Lisa Simpson, MB, BCh, MPH, FAAP
President and CEO
[@DrSimpsonHSR](#)